



Vision Control® features a patented combination of cordless louvers between hermetically sealed glass panes and can be customized to virtually any shape in interior or exterior glazing applications for unmatched function and performance.

# A STRONG TRACK RECORD OF INNOVATION



**Patented,  
proprietary  
technology**



**Up to 20-year  
warranty**



**Highly cost-  
effective: Pays  
for itself**



**Germ-free,  
Dust-free and  
Maintenance-  
free**



**Drives energy  
efficiencies**



**Ensures hygiene,  
privacy and  
comfort**



**Aesthetically  
pleasing**

# CUSTOMIZED TO YOUR PROJECT NEEDS

## AAMA 501.8 PERFORMANCE CERTIFICATION

Attack-resistant glazing and adaptable ligature-resistant operators offer protection to patients and staff in behavioral and mental health hospitals. Vision Control® and Vision Control® Mini have passed the AAMA 501.8 Behavioral Health Tests for 2000 ft-lbs of Human Impact on both interior and exterior applications.

## FIRE-RATED GLAZING SOLUTION

Vision Control® and Vision Control® Mini integrated cord-free louvers and Pilkington Pyrostop® fire-rated glazing provide unprecedented privacy control with fire-ratings of 20, 45, 60 and 90 minutes for doors, windows, transoms and sidelights.

## X-RAY SHIELDING

Vision Control® and Vision Control® Mini can serve as an integral part of an x-ray room viewing window. Both systems can incorporate leaded glass to provide x-ray shielding.

## LASER RADIATION PROTECTION

Vision Control® and Vision Control® Mini can serve as an integral part of a laser protective housing scheme. When the louvers are in closed position, both systems can block a wide range of lasers used in medical applications, operating in pulsed or continuous mode and up to 100W beam intensity.

## SMOKE-RATED SLIDING AND SWING DOORS

Vision Control® Mini can be used with UL 1784 certified sliding and swinging smoke rated door assemblies.

## NEW TOUCHLESS SENSOR OPERATOR

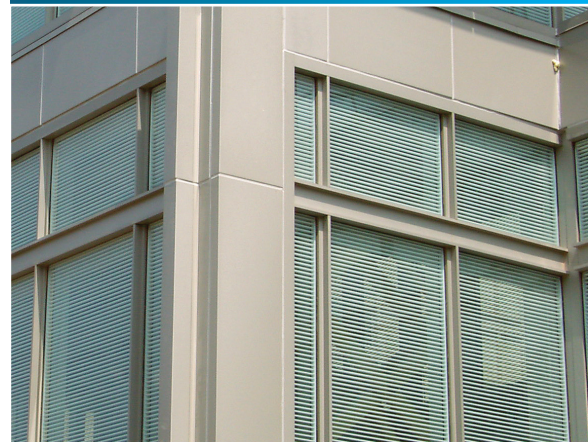
Vision Control® and Vision Control® Mini provide solutions to control the spread of infections and increase safety for both front-line staff and patients. Vision Control® features multiple control mechanisms including a new touchless sensor, ideal for behavioral health applications.

### INTERIOR APPLICATIONS



**Ideal for:** Interior partitions, borrowed lites, sidelites, swing doors, sliding doors, and more

### EXTERIOR APPLICATIONS



**Ideal for:** Doors, windows, curtain walls, skylights and much more

**Scan QR code for  
quick access  
to Vision Control®  
product information**

