



Making an ICU Optimally Quiet and Private for Veterans

Syracuse Veteran's Affairs (VA) Medical Center

The Syracuse VA Medical Center is part of VA Health Care Upstate New York and utilizes state-of-the-art technology to provide a full range of patient care services, education and research. The 106-bed general medical and surgical facility provides comprehensive care for Veterans and their family members. The Department of Veterans Affairs named the Syracuse VA Medical Center as a Center of Excellence for its Operation Enduring Freedom/Operation Iraqi Freedom and Polytrauma programs. The Syracuse facility is also the principal referral center for neurosurgery and urological renal stone treatment, serving all upstate New York and northern Pennsylvania veterans. The Syracuse VA provides primary and behavioral health care in a 13-county area of Central New York through seven community based outpatient clinics in Auburn, Binghamton, Cortland, Massena, Oswego, Rome, and Watertown.

The Project - WARD 6B - ICU

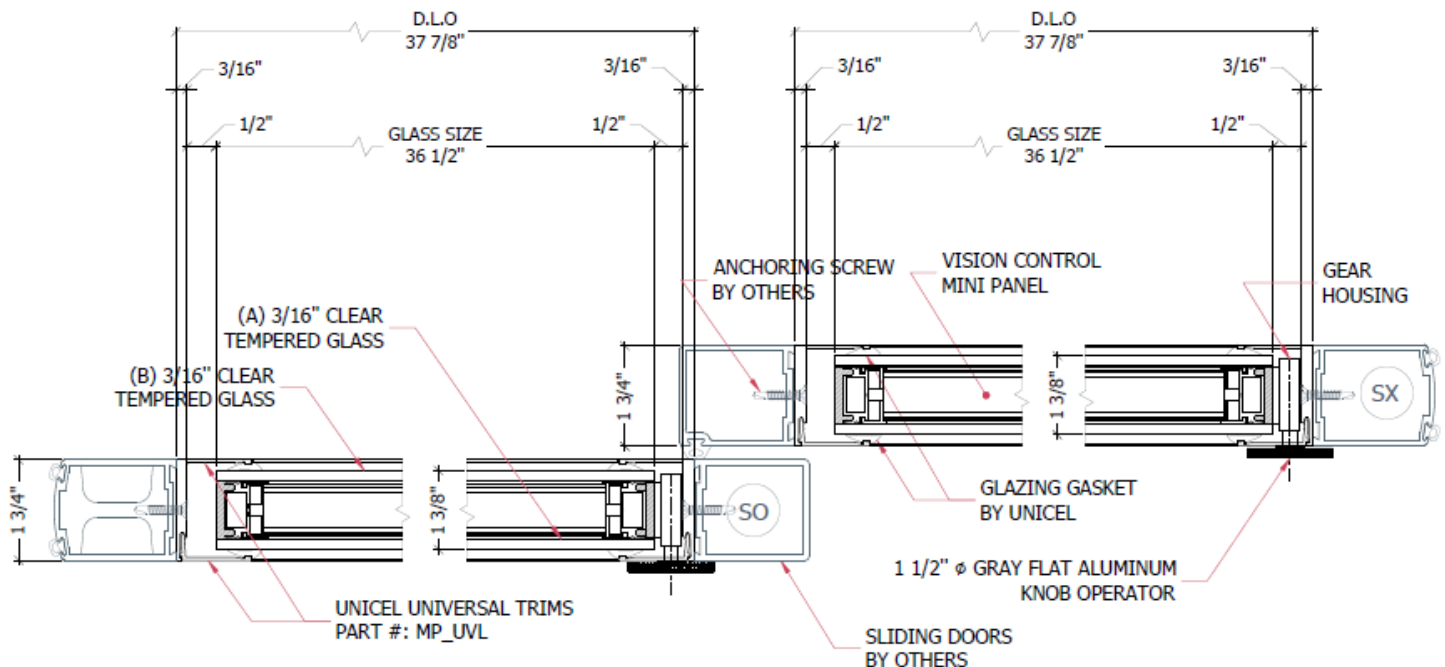
The Syracuse VA Medical Center needed to renovate its 6th Floor B wing (Ward 6B) space for use as a new medical/surgical inpatient ward. This included the demolition of existing walls, electric, lighting, ceiling, floor tile, abate asbestos mastic and pipe insulation, and the installation of new mechanical equipment, ductwork, and plumbing for approximately 10,000 gross square feet of existing ward space. The new ward was to have 20 bed units with 16 private patient rooms and private baths, two double patient rooms and baths, and all the necessary appurtenances for an inpatient surgical care area. Sliding doors were a primary opening/entry feature for easy and efficient access.

Sliding Door Solution

Project architects selected integrated cord-free louvers from Unicel Architectural to ensure flexible privacy options along with sound attenuating qualities - specifically, 68 Vision Control® Mini units in 17 Assa-Abloy sliding ICU doors. Vision Control® Mini is the slimmer interior privacy glazing version of Unicel's market-leading Vision Control® product. Perfectly suited for healthcare environments, Vision Control® Mini is a patented, hermetically sealed glass unit with operable louvers that can be customized for virtually any application. Its advanced technology eliminates strings, ensures alignment and requires no maintenance. Made with a 1" (25.4mm) airspace that is ideal for sliding doors and other interior door applications, it comes with a Universal Door Trim Kit made of extruded aluminum, designed to adapt to any 1 3/4" (44mm) thick sliding doors. Components of the Syracuse VA Medical Center Ward 6B sliding doors included:

- 3/16" (5mm) clear tempered glass
- 1" (25.4mm) airspace
- 3/16" (5mm) regular interlock blades
- 1 1/2" (38mm) gray flat aluminum knobs, operable from one side only
- Aluminum universal trim kits, with clear anodized finish

Section View of Panels





Results

The Syracuse VA Medical Center Ward 6B now features state of the art sliding doors that operate noiselessly and automatically for easy and tranquil function. They can further be adjusted readily for various levels of visibility ranging from fully opened to completely blocked. Patients are assured of privacy and calm at a time when they need it most. The efficacy of this solution further prompted the Syracuse VA Medical Center to order an additional 64 Vision Control® Mini panels for 16 new sliding doors to be installed as part of a new renovation project in the hospital's Ward 6C.

Participants:

Client: Syracuse VA Medical Center

Architect: N. K. Bhandari Architecture & Engineering, P.C. (NKB)

Sliding Doors: Assa Abloy (East Syracuse, NY)

Integrated Louvers: Unicel Architectural (Montreal, QC)

