



**Frame not included (for illustration purposes only)
Wand operator shown*

Available with:

- *Knob*



- *External Motor*



- *Cord*



- *Wand*



The ViuLite® SL20A insulating glass units are manufactured in accordance with high technical specifications and production standards. The slat **tilting only** function is achieved using rotational magnetic transmission through the glass thereby guaranteeing the unit's hermetic seal.

Slat

Aluminum, AA 6011-T8 alloy. Dimensions: width 1/2" (12.5mm), thickness 0.2mm. High-resistance polyester paint. The slats have a special treatment designed to eliminate possible emissions of chemical products inside the insulated glass unit, when exposed to ultraviolet and heat radiation i.e. non-fogging.

Internal cords

Thermofixed 100% polyester with internal core and excellent dimensional stability.

OPERATOR: KNOB - (MOUNTED ON TOP RAIL)
(ALSO AVAILABLE ON BOTH SIDES;
CONTACT UNICEL ARCHITECTURAL FOR MORE INFORMATION)

SLAT OPERATION: TILT-ONLY

AIR SPACE: 27/32" (21.4mm) ☐ ARGON ☐ AIR

SLAT WIDTH: 1/2" (12.5mm)

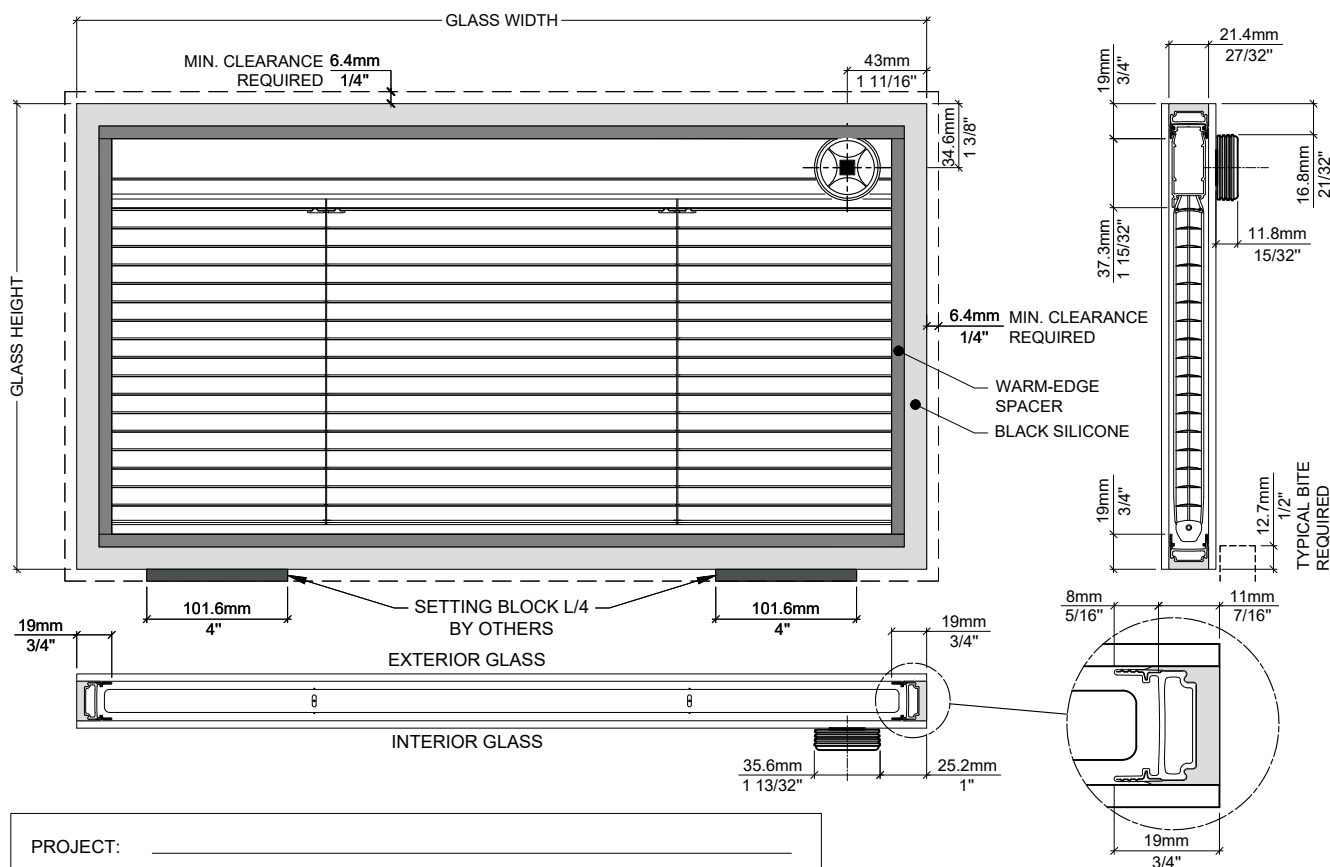
SLAT COLOR: ☐ S102 WHITE
☐ S157 SILVER
☐ S125 BEIGE

SPACER: WARM-EDGE: BLACK RAL9005

OPERATOR COLOR: ☐ WHITE
☐ LIGHT GRAY

INTERIOR GLASS:

EXTERIOR GLASS:

[illegible]

PROJECT: _____

ARCHITECT: _____

CLIENT: _____

JOB SITE: _____

DATE: _____

SIGNATURE: _____

DATE: _____

Unicel Architectural Corp.
2155 Fernand-Lafontaine
Longueuil • Québec • J4G 2J4 • Canada

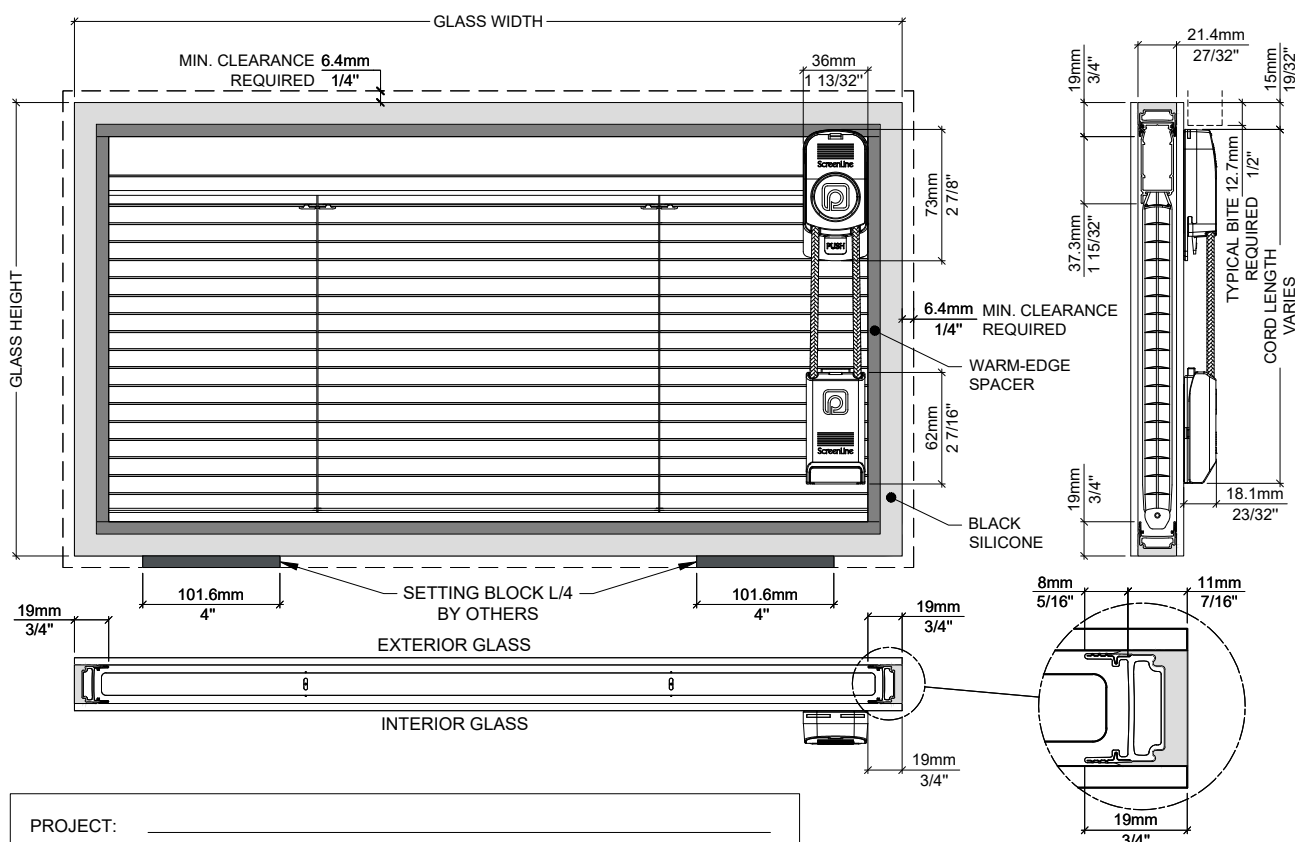
VIULITE® VL 1.2



EXTERIOR GLASS:

VIULITE® PANELS REQUIRED			
FOR FEASIBILITY CHARTS, PLEASE REFER TO VL 1.7			
QTY	GLASS SIZE		CORD LENGTH
	WIDTH	HEIGHT	

FRAMES MUST BE SQUARE, PLUMB AND LEVEL



PROJECT: _____

ARCHITECT: _____

CLIENT: _____

JOB SITE: _____

DATE: _____

SIGNATURE: _____

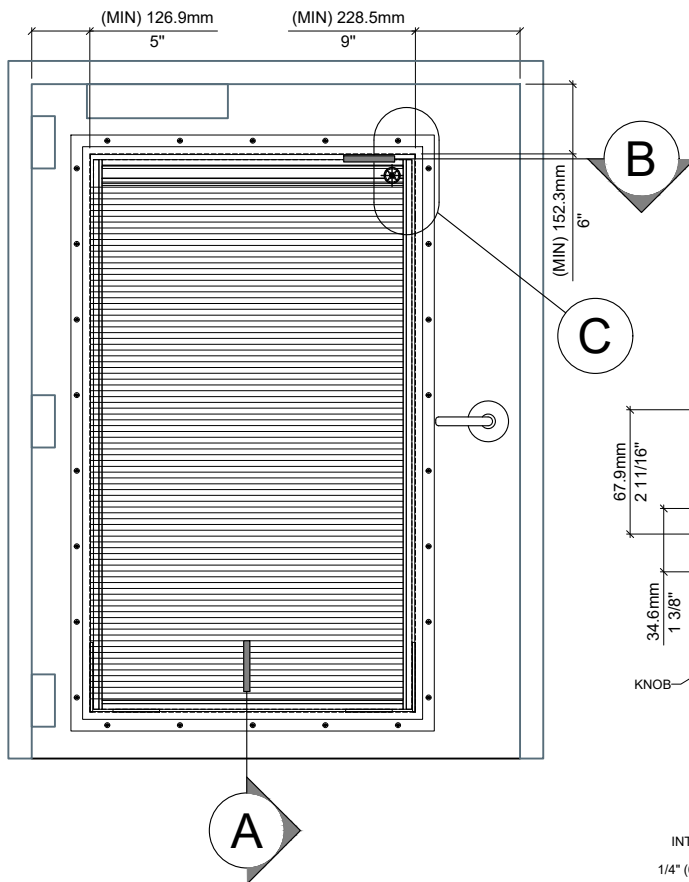
DATE: _____

Unicel Architectural Corp.
2155 Fernand-Lafontaine
Longueuil • Québec • J4G 2J4 • Canada

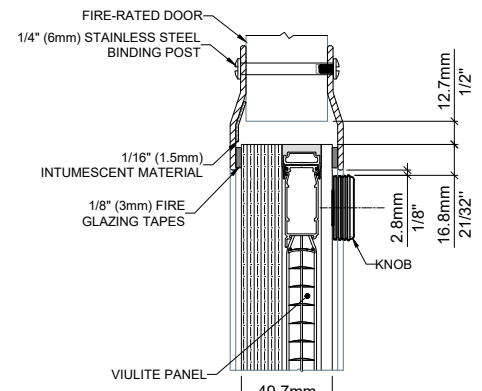
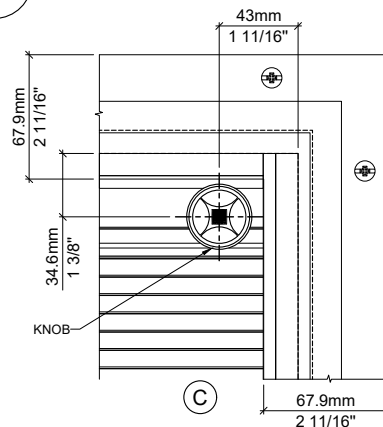
VIULITE® VL 1.3

OPERABLE ON ONE SIDE

VIULITE® FURNISHED FACTORY-GLAZED IN UNICEL ARCHITECTURAL'S FIRE-RATED STEEL TRIMS (45 MIN. UL / 60 MIN. BS)
MAXIMUM CUT-OUT DIMENSION OF ROUGH OPENING IN DOOR SLAB = 29" X 48" (737mm X 1219mm)



VIEW FROM THE OPPOSITE
SIDE OF THE PYROSTOP®
GLASS

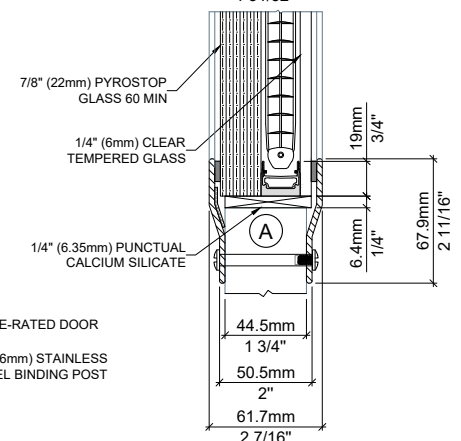
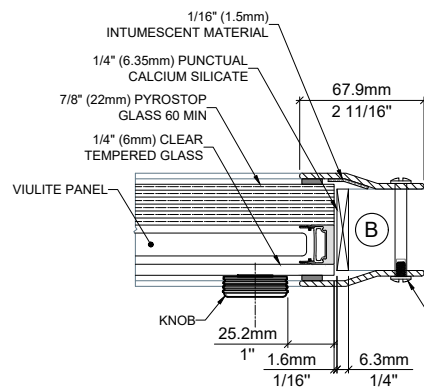
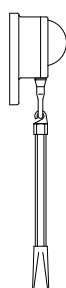


OPTIONAL OPERATORS:

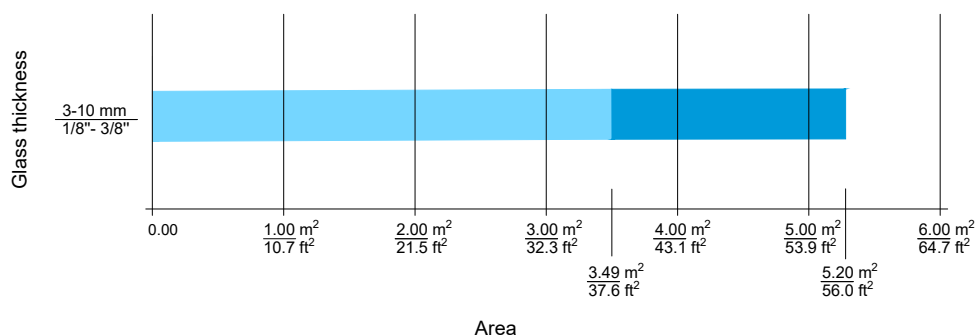
CORD



WAND



Maximum glass area on operating side:



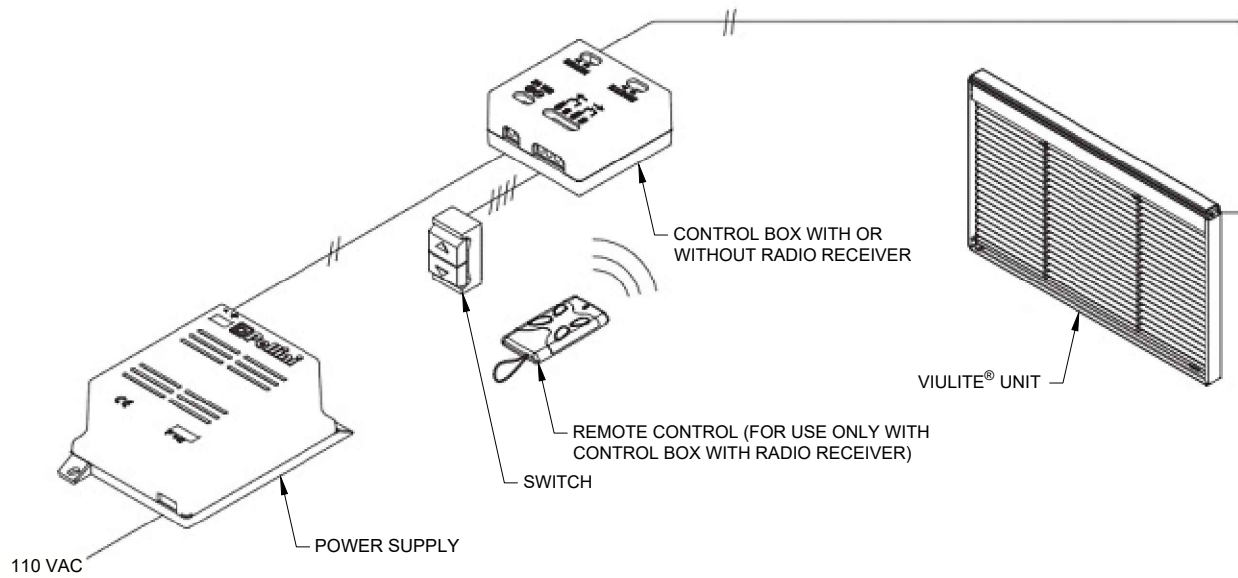
- Blinds can only be tilted with locked bottom rail.
- Blinds can only be tilted but will be delivered completely raised (temporarily, for transportation purposes).

Possible dimensions*:

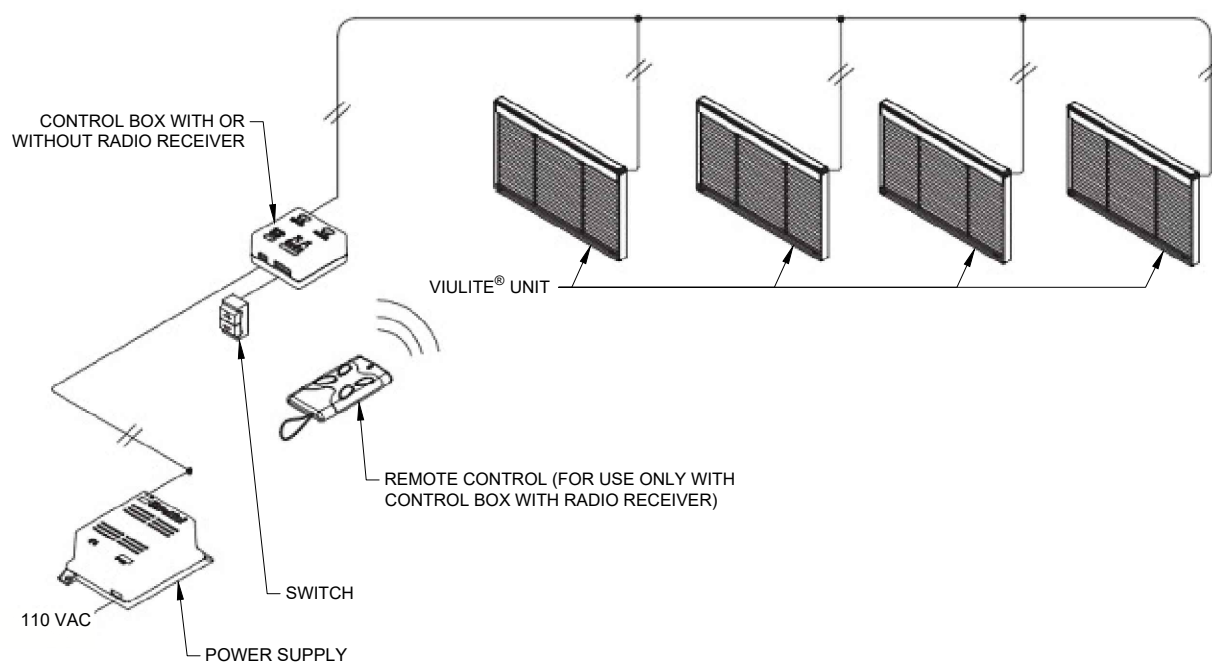
Minimum Width = 8 5/8" (219mm)	Maximum Width = 78 3/4" (2000mm)
Minimum Height = 8 5/8" (219mm)	Maximum Height = 102 3/8" (2600mm)

* If required size is outside of feasibility range, please contact Unicel Architectural for special arrangements.

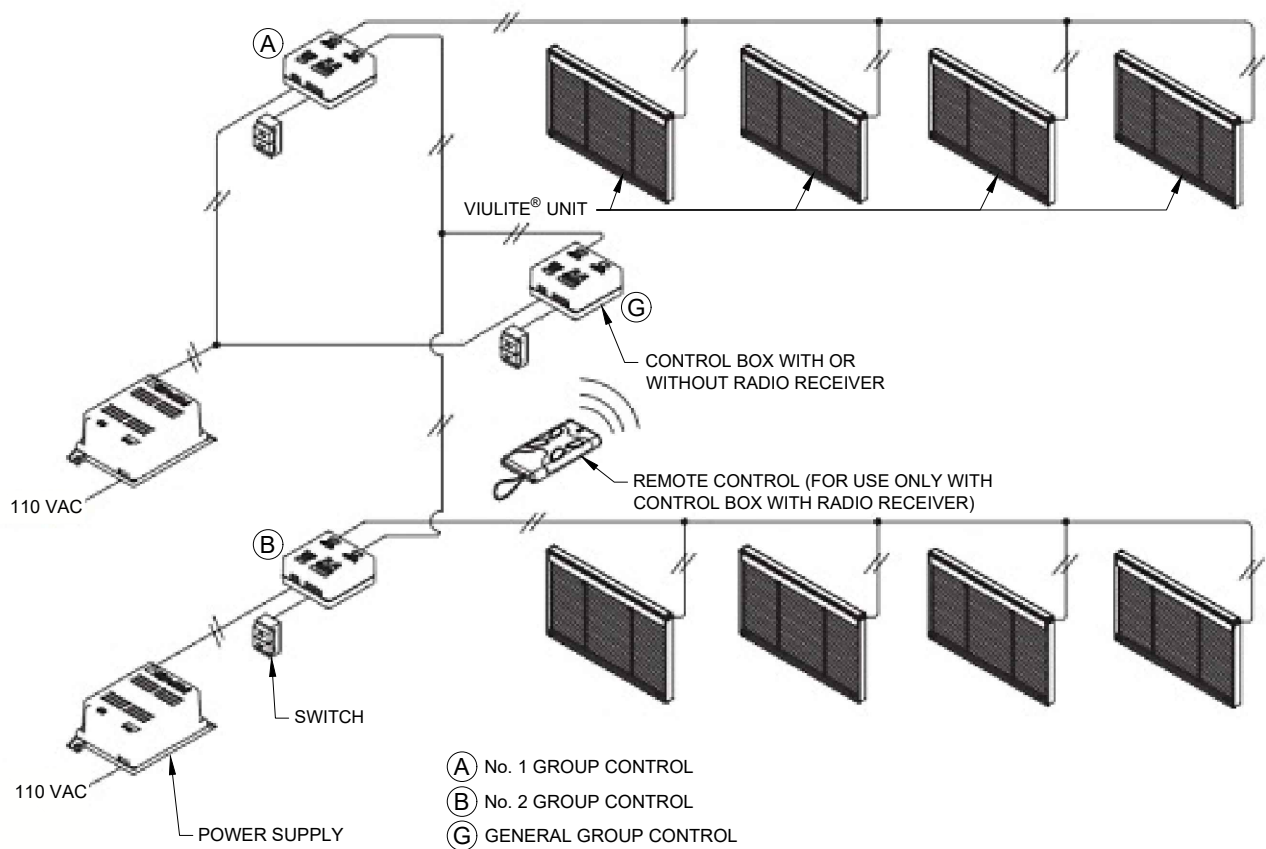
INDEPENDENT UNIT



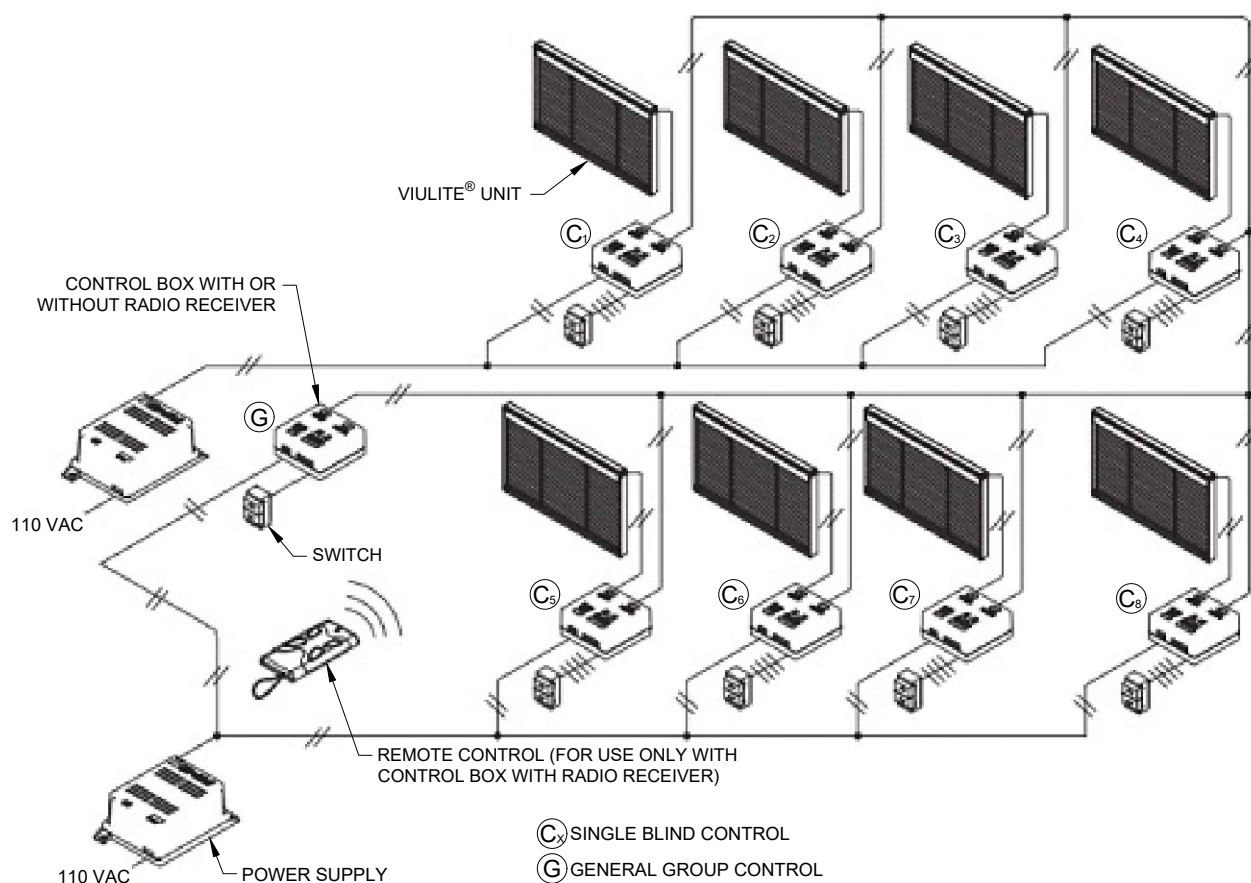
1 GROUP OF UP TO 4 UNITS



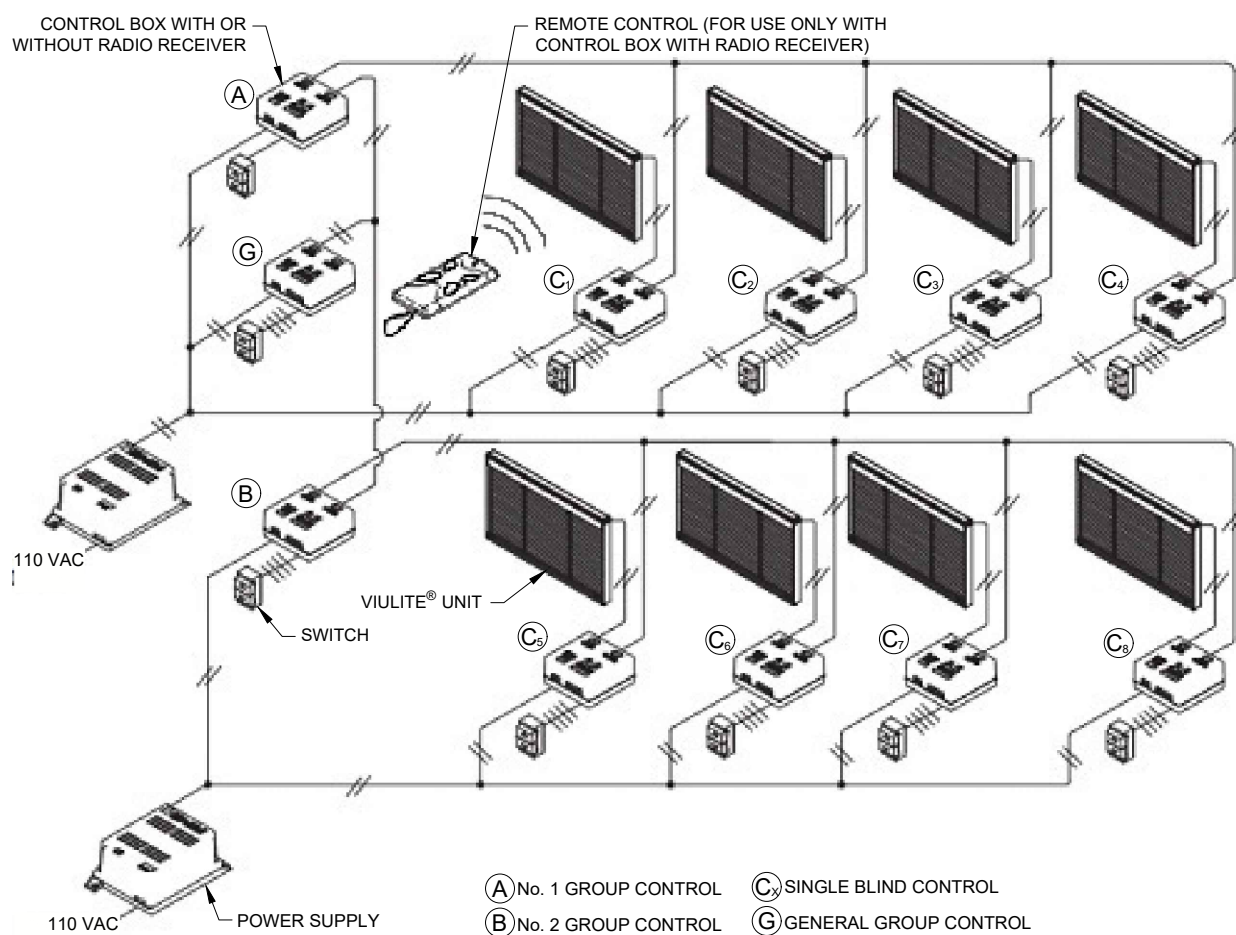
1 MASTER CONTROL + X SUB GROUPS



1 MASTER CONTROL + X INDIVIDUAL CONTROLS



1 MASTER CONTROL + X GROUP + X INDIVIDUAL CONTROLS





**Frame not included (for illustration purposes only)
Cord operator shown*

Available with:

- *External Motor*
- *Cord*



The ViuLite® SL20C insulating glass units are manufactured in accordance with high technical specifications and production standards. The slat **tilting, raising and lowering** functions are achieved using rotational magnetic transmission through the glass thereby guaranteeing the unit's hermetic seal.

Slat

Aluminum, AA 6011-T8 alloy. Dimensions: width 1/2" (12.5mm), thickness 0.2mm. High-resistance polyester paint. The slats have a special treatment designed to eliminate possible emissions of chemical products inside the insulated glass unit, when exposed to ultraviolet and heat radiation i.e. non-fogging.

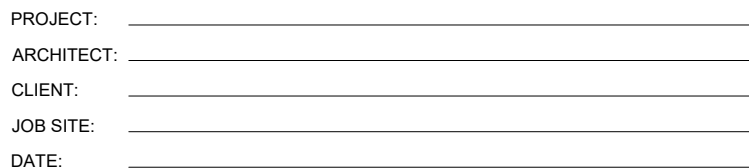
Internal cords

Thermofixed 100% polyester with internal core and excellent dimensional stability.



VIULITE® PANELS REQUIRED			
FOR FEASIBILITY CHARTS, PLEASE REFER TO VL 2.5			
QTY	GLASS SIZE		CORD LENGTH
	WIDTH	HEIGHT	

FRAMES MUST BE SQUARE, PLUMB AND LEVEL



Unicel Architectural Corp.
2155 Fernand-Lafontaine
Longueuil • Québec • J4G 2J4 • Canada





EXTERIOR GLASS:

 LIGHT GRAY

POWER SUPPLIES:

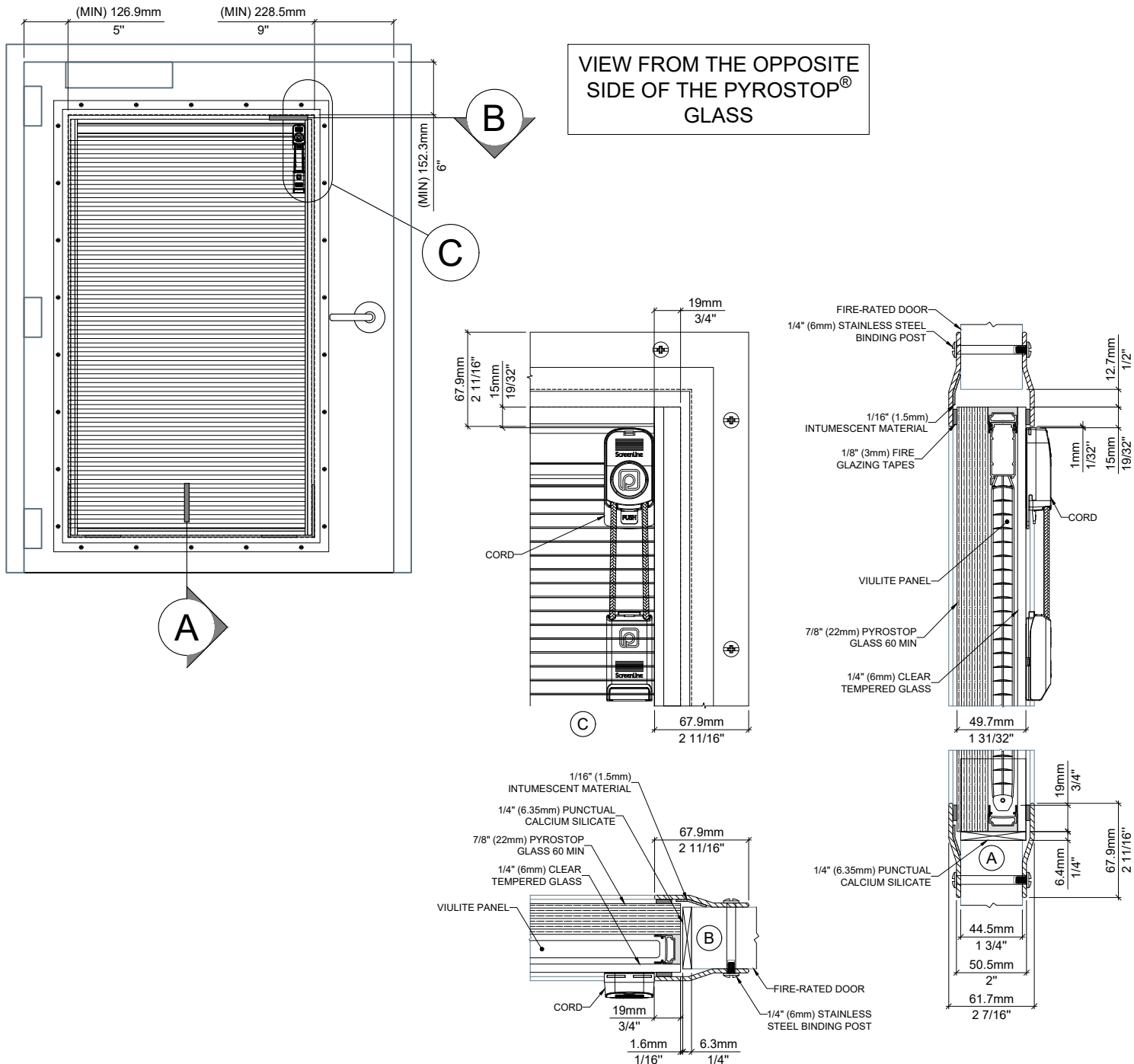
QTY
REQUIRED[illegible]

DATE: _____

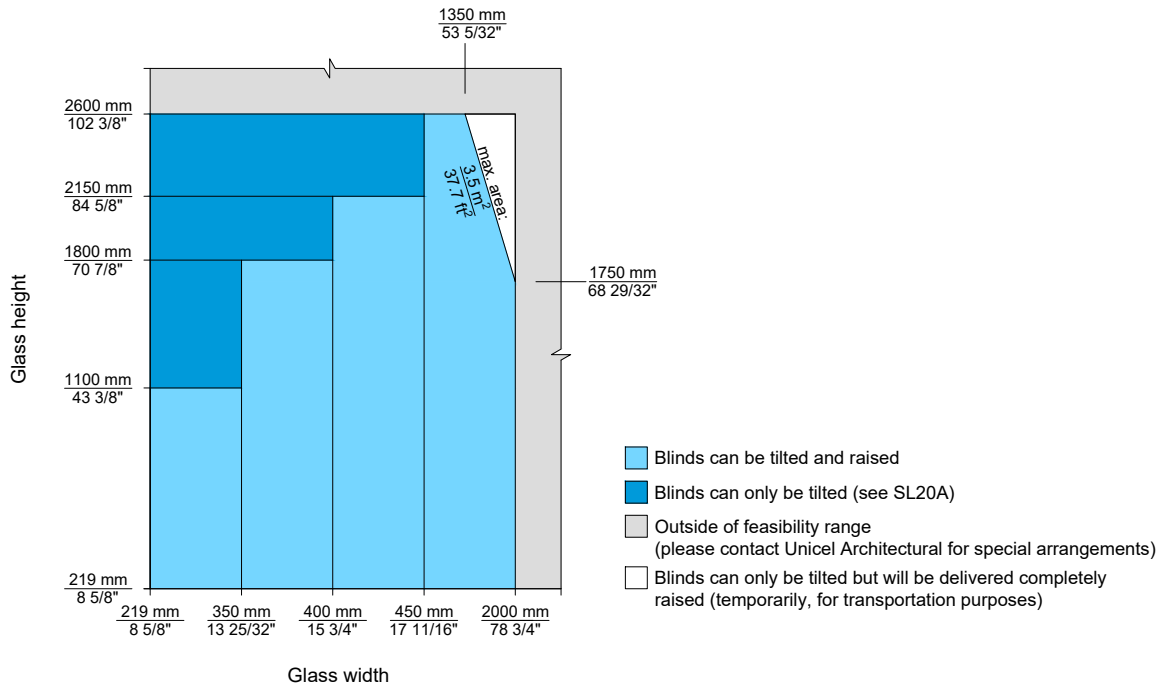
VIU LITE[®] VL 2.3

OPERABLE ON ONE SIDE

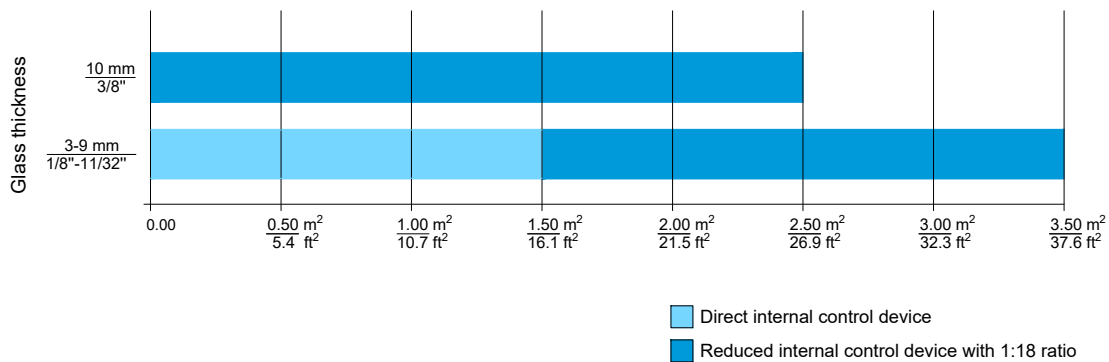
VIULITE® FURNISHED FACTORY-GLAZED IN UNICEL ARCHITECTURAL'S FIRE-RATED STEEL TRIMS (45 MIN. UL / 60 MIN. BS)
MAXIMUM CUT-OUT DIMENSION OF ROUGH OPENING IN DOOR SLAB = 29" X 48" (737mm X 1219mm)



Glass size feasibility range:



Operating speed:

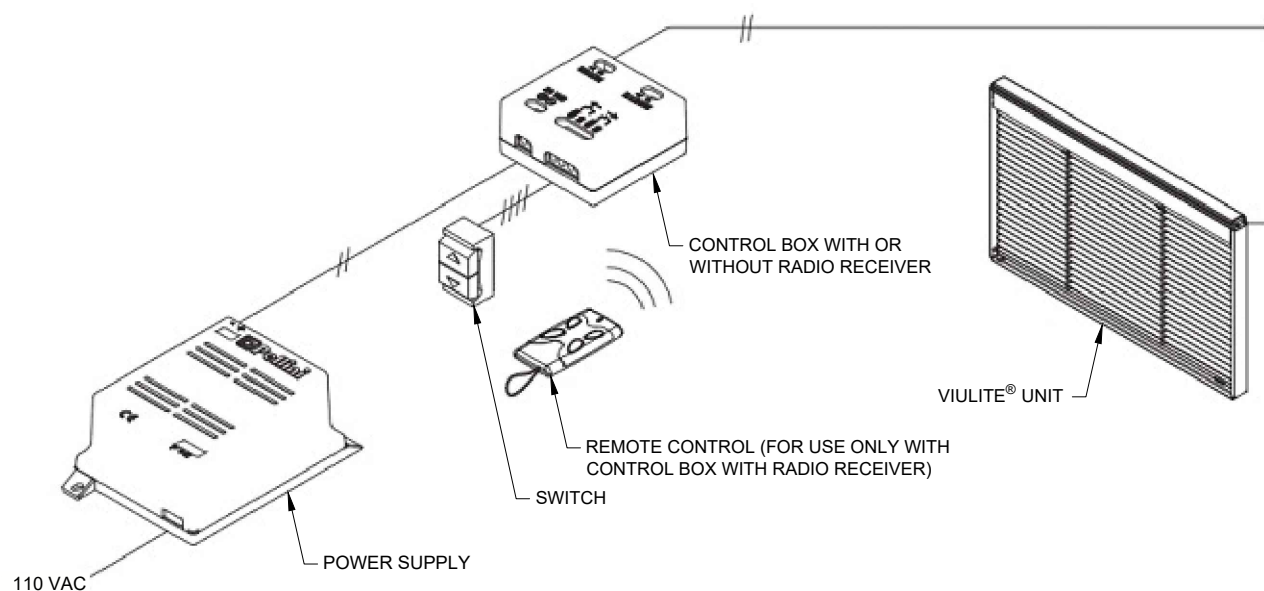


Operating speed with external motor 24V:

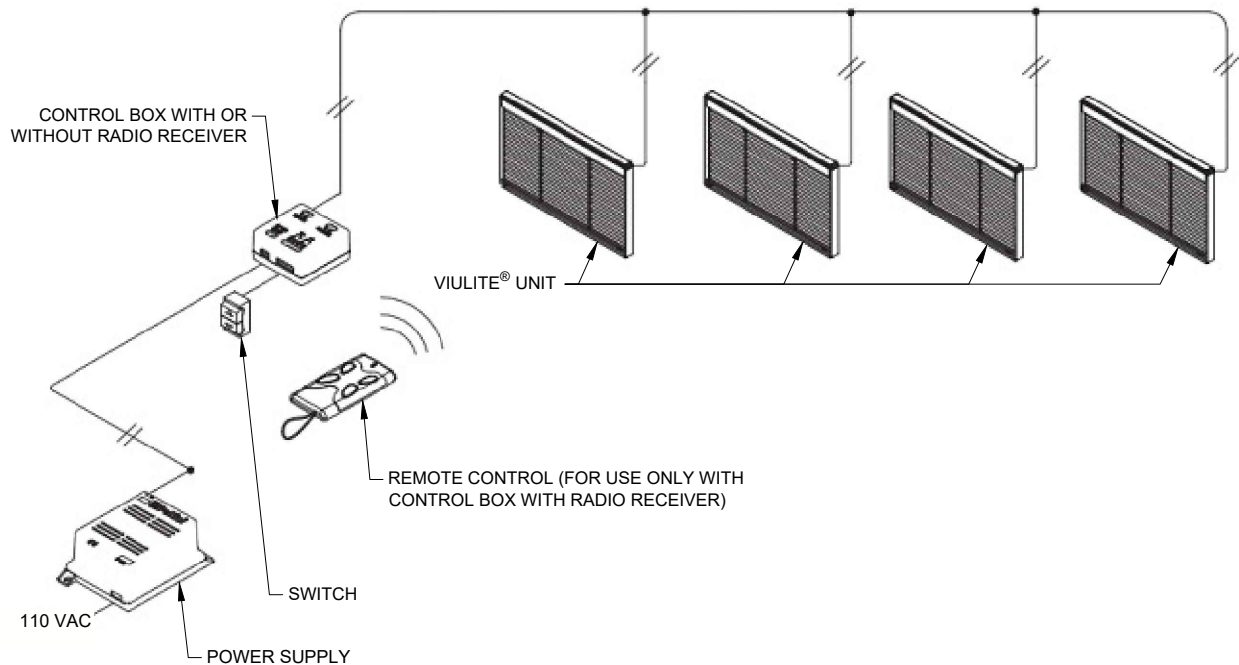
Up to 26.9 ft² (2.5 m²) operating speed is about 4'-11"/min (1.5m/min)

From 27 ft² to 37.6 ft² (2.51 m² to 3.5 m²) operating speed is about 3'-3 3/8"/min (1m/min)

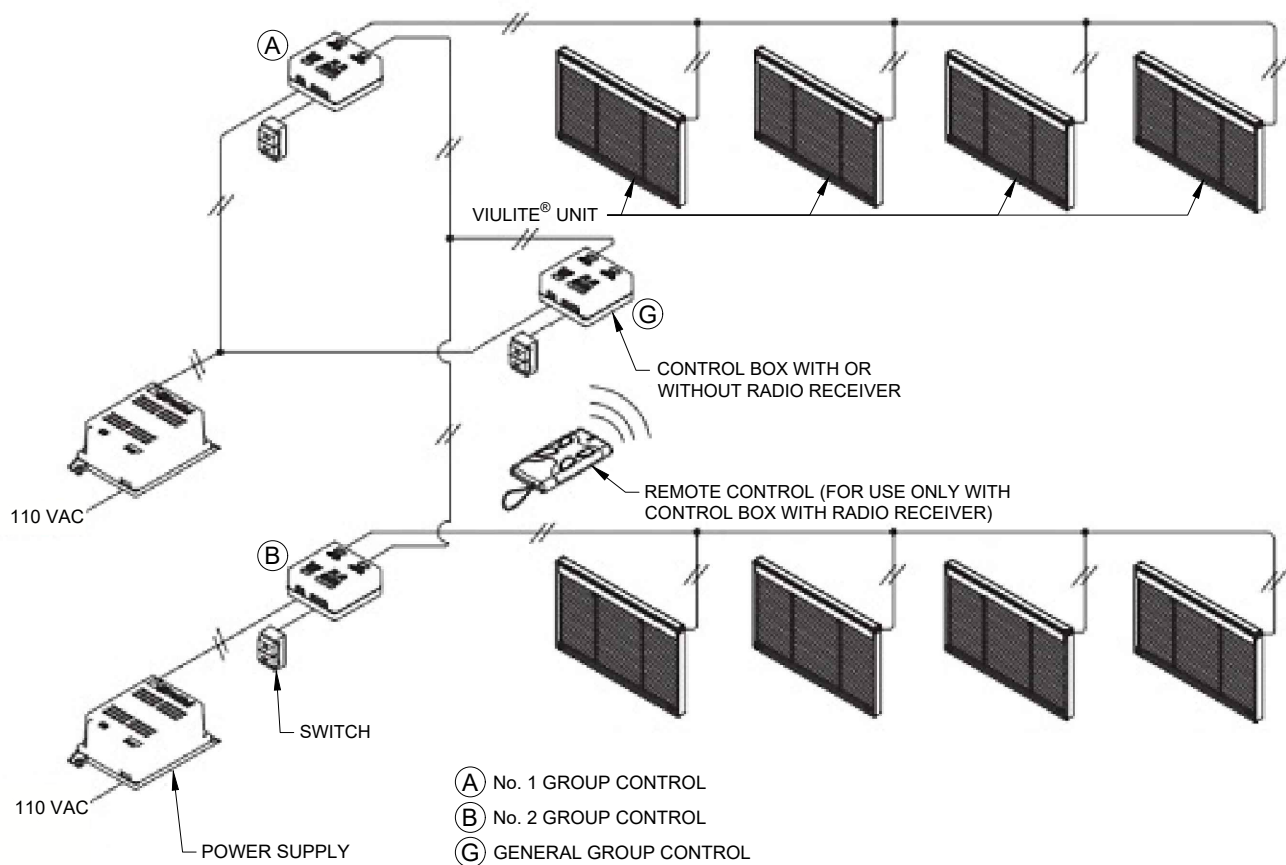
INDEPENDENT UNIT



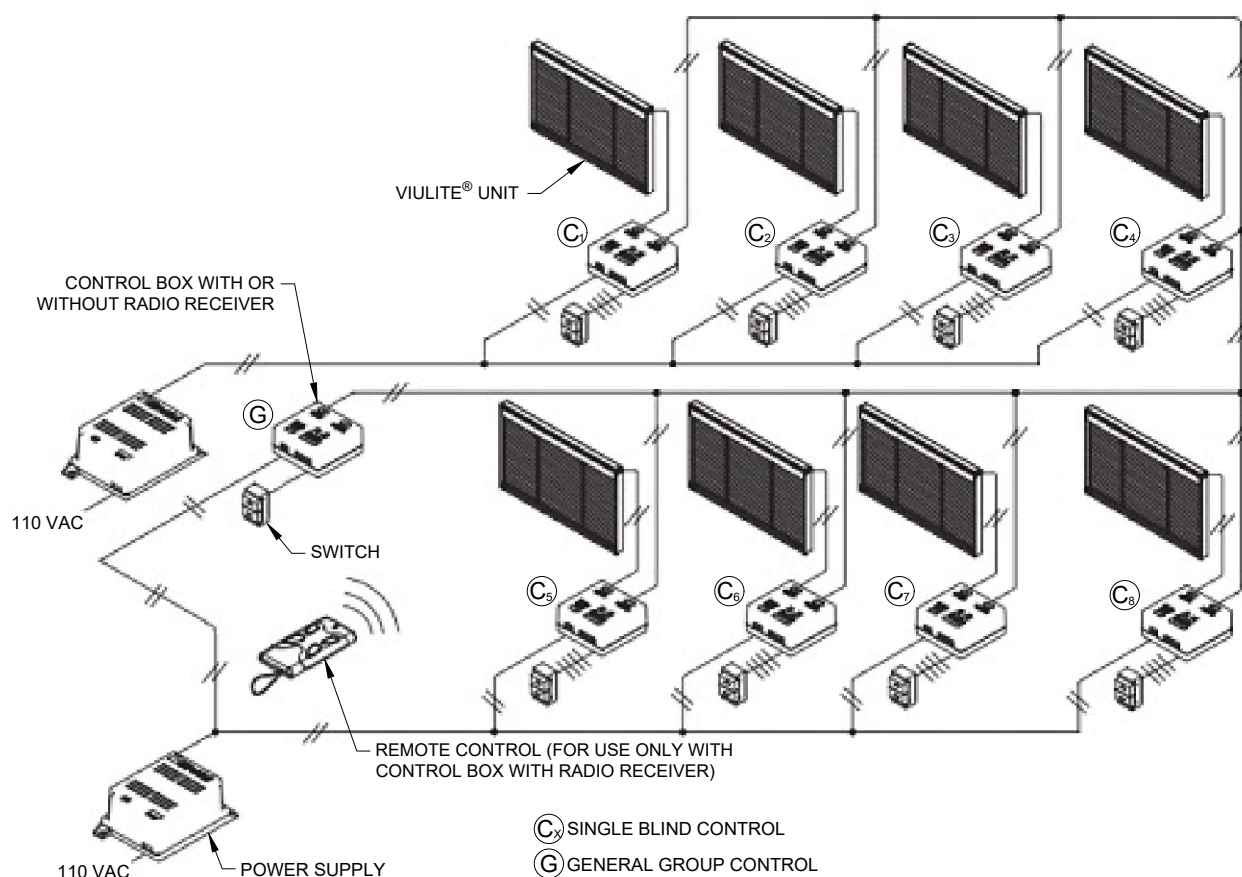
1 GROUP OF UP TO 4 UNITS



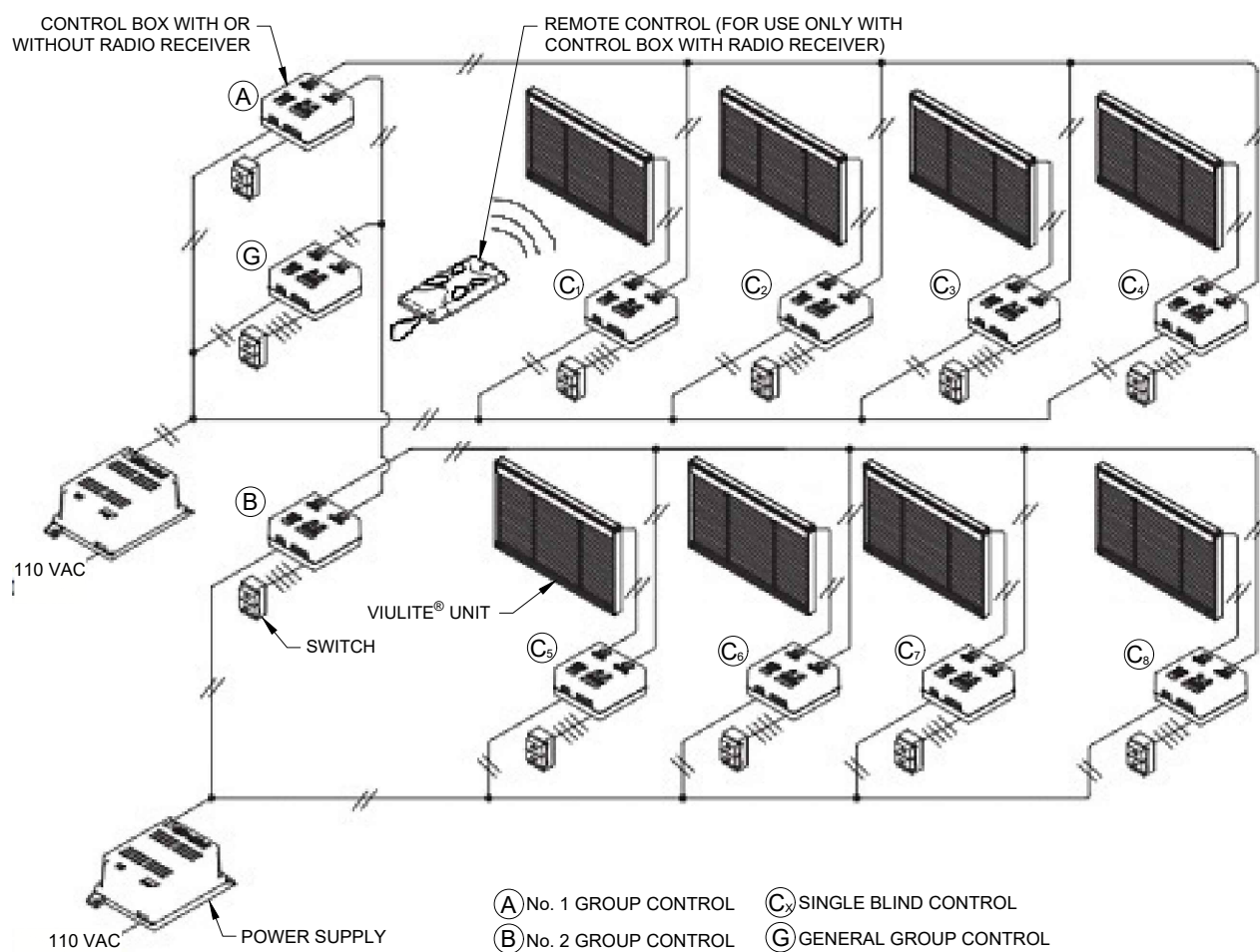
1 MASTER CONTROL + X SUB GROUPS



1 MASTER CONTROL + X INDIVIDUAL CONTROLS



1 MASTER CONTROL + X GROUP + X INDIVIDUAL CONTROLS





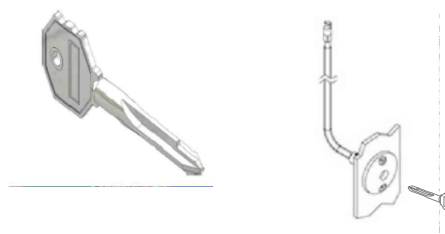
**Frame not included (for illustration purposes only)
Ligature-resistant knob operator shown*

Available with:

- *Ligature-resistant Knob*



- *Removable Key*



The ViuLite® SL20P insulating glass units are manufactured in accordance with high technical specifications and production standards. The slat **tilting only** function is achieved using rotational magnetic transmission through the glass thereby guaranteeing the unit's hermetic seal.

Slat

Aluminum, AA 6011-T8 alloy. Dimensions: width 1/2" (12.5mm), thickness 0.2mm. High-resistance polyester paint. The slats have a special treatment designed to eliminate possible emissions of chemical products inside the insulated glass unit, when exposed to ultraviolet and heat radiation i.e. non-fogging.

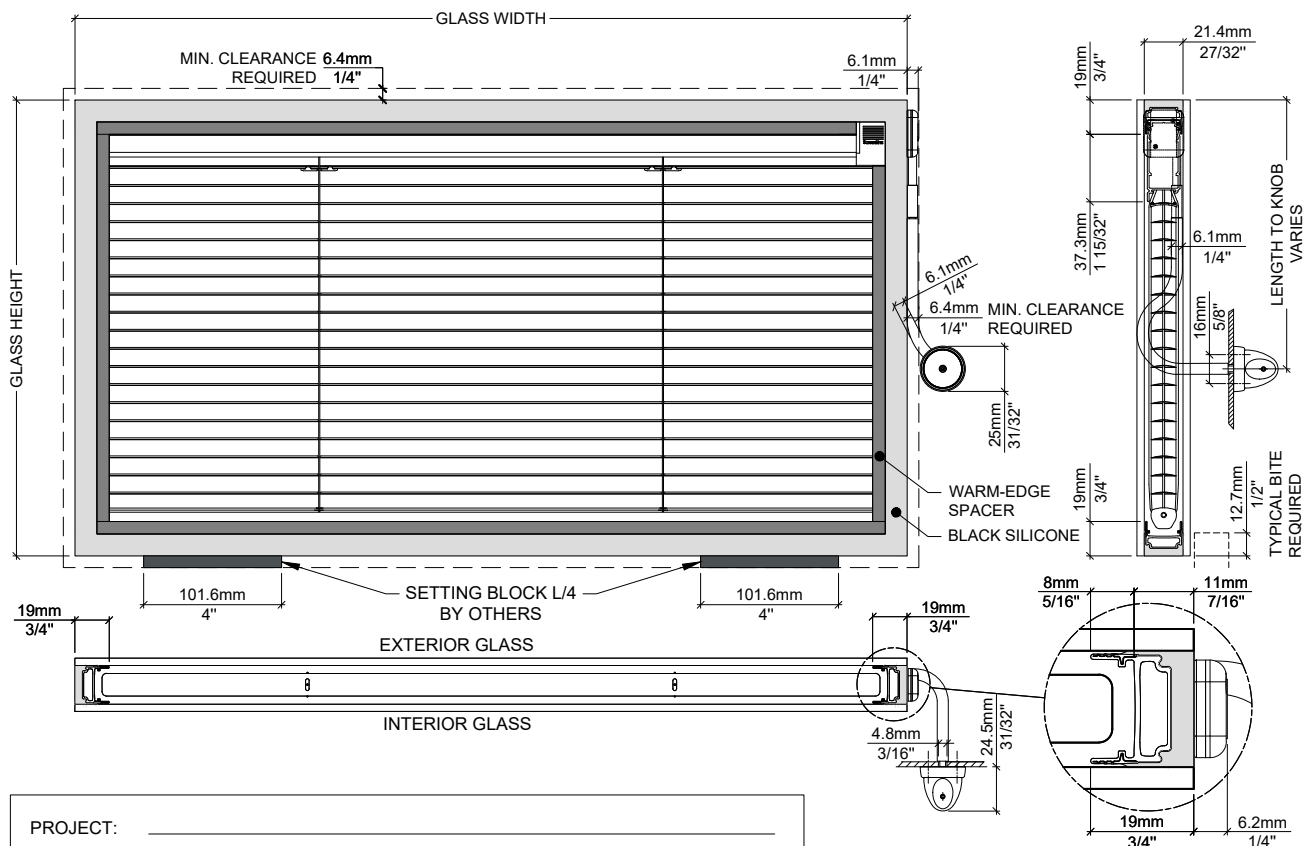
Internal cords

Thermofixed 100% polyester with internal core and excellent dimensional stability.



EXTERIOR GLASS:

VIULITE® PANELS REQUIRED			
FOR FEASIBILITY CHARTS, PLEASE REFER TO VL 3.5			
QTY	GLASS SIZE		
	WIDTH	HEIGHT	CORD LENGTH
FRAMES MUST BE SQUARE, PLUMB AND LEVEL			



PROJECT: _____

ARCHITECT: _____

CLIENT: _____

JOB SITE: _____

DATE: _____

SIGNATURE: _____

DATE: _____

Unicel Architectural Corp.
2155 Fernand-Lafontaine
Longueuil • Québec • J4G 2J4 • Canada

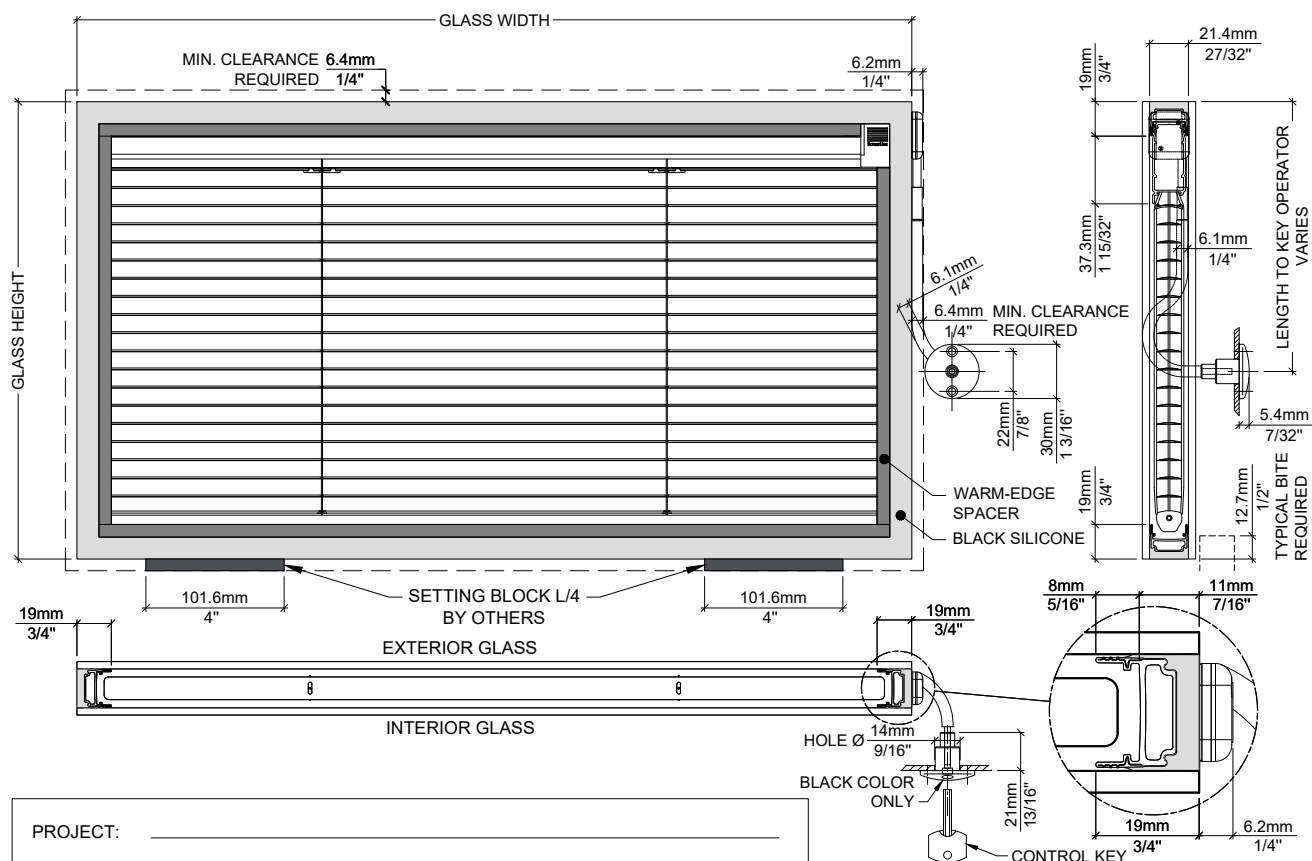
VIU LITE[®] VL 3.2

VIULITE® SL20P REMOVABLE KEY

OPERATOR:	REMOVABLE KEY
SLAT OPERATION:	TILT-ONLY
AIR SPACE:	27/32" (21.4mm) <input type="checkbox"/> ARGON <input type="checkbox"/> AIR
SLAT WIDTH:	1/2" (12.5mm)
SLAT COLOR:	<input type="checkbox"/> S102 WHITE <input type="checkbox"/> S157 SILVER <input type="checkbox"/> S125 BEIGE
SPACER:	WARM-EDGE; BLACK RAL9005
OPERATOR COLOR:	BLACK (BASE PLATE ONLY)
CONTROL KEY: (1 INCLUDED)	QTY TOTAL REQUIRED: _____
INTERIOR GLASS:	
EXTERIOR GLASS:	

VIULITE® PANELS REQUIRED FOR FEASIBILITY CHARTS, PLEASE REFER TO VL 3.5			
QTY	GLASS SIZE		LENGTH TO KEY OPERATOR
	WIDTH	HEIGHT	

FRAMES MUST BE SQUARE, PLUMB AND LEVEL



PROJECT: _____

ARCHITECT: _____

CLIENT: _____

JOB SITE: _____

DATE: _____

SIGNATURE: _____

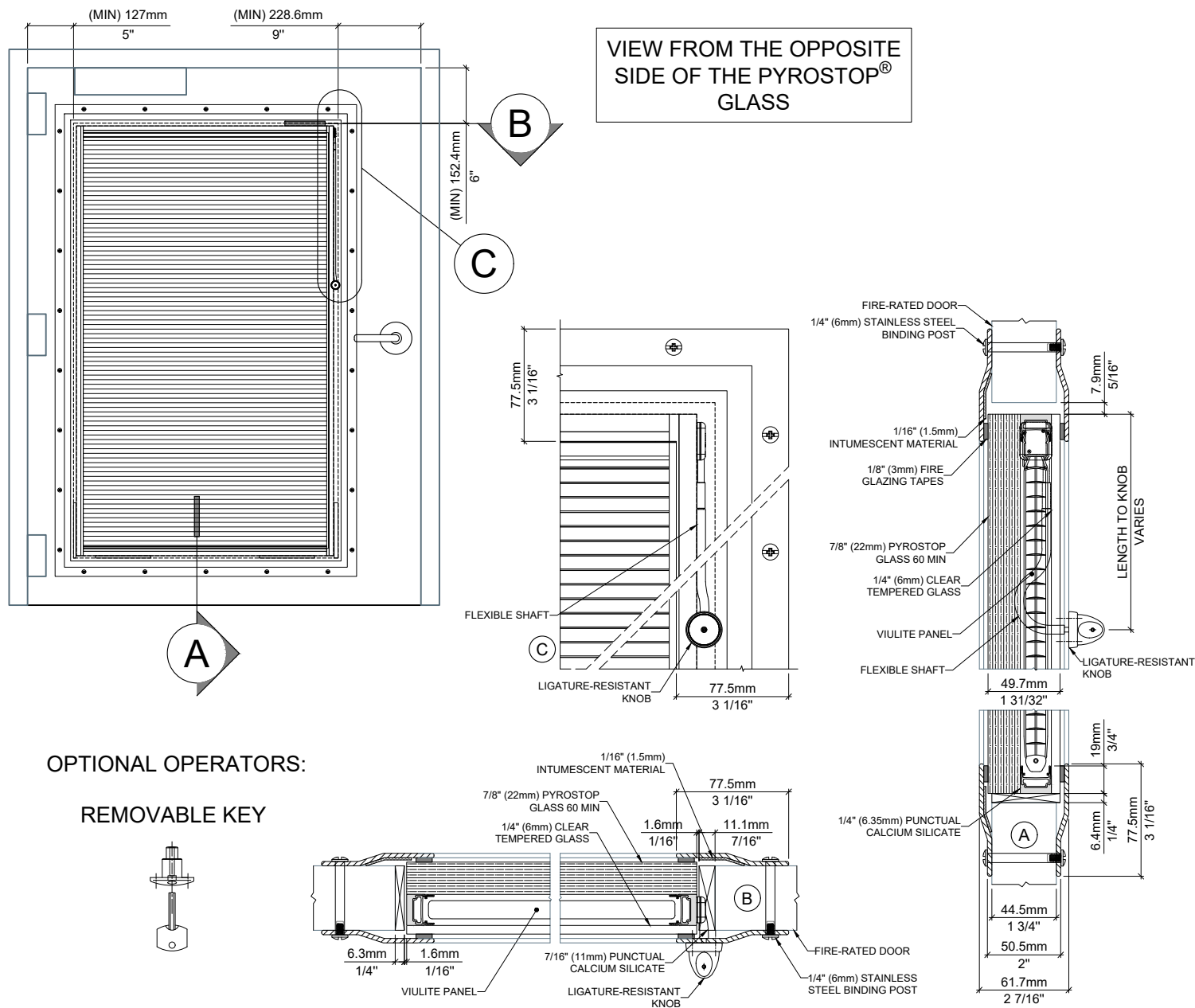
DATE: _____

Unicel Architectural Corp.
2155 Fernand-Lafontaine
Longueuil • Québec • J4G 2J4 • Canada

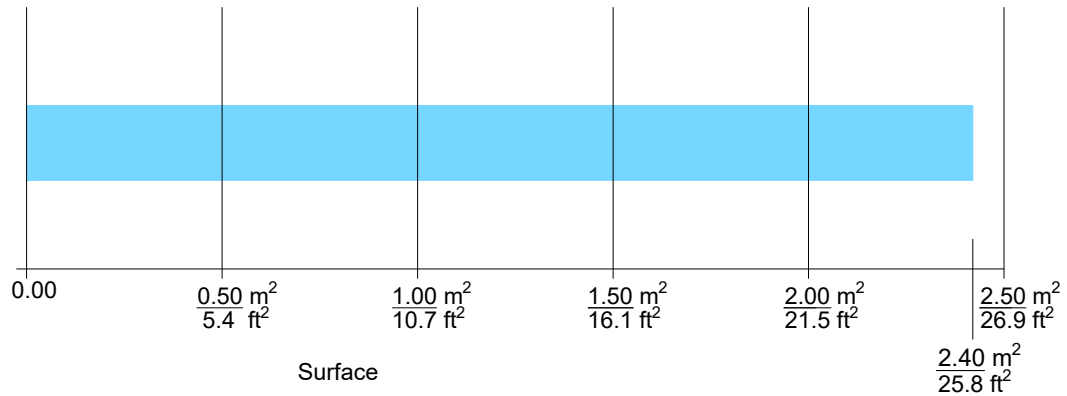
VIU^{LITE}® VL 3.3

OPERABLE ON ONE SIDE

VIULITE® FURNISHED FACTORY-GLAZED IN UNICEL ARCHITECTURAL'S FIRE-RATED STEEL TRIMS (45 MIN. UL / 60 MIN. BS)
MAXIMUM CUT-OUT DIMENSION OF ROUGH OPENING IN DOOR SLAB = 29" X 48" (737mm X 1219mm)



Maximum glass area:



Possible dimensions*:

Minimum Width = 6" (152mm)	Maximum Width = 78 3/4" (2000mm)
Minimum Height = 8 5/8" (219mm)	Maximum Height = 98 7/16" (2500mm)

* If required size is outside of feasibility range, please contact Unicel Architectural for special arrangements.



**Frame not included (for illustration purposes only)*

Available with:

- Knob



The ViuLite® SL20B insulating glass units are manufactured in accordance with high technical specifications and production standards. The slat **tilting only** function is achieved using rotational magnetic transmission through the glass thereby guaranteeing the unit's hermetic seal.

Slat

Aluminum, AA 6011-T8 alloy. Dimensions: width 1/2" (12.5mm), thickness 0.2mm. High-resistance polyester paint. The slats have a special treatment designed to eliminate possible emissions of chemical products inside the insulated glass unit, when exposed to ultraviolet and heat radiation i.e. non-fogging.

Internal cords

Thermofixed 100% polyester with internal core and excellent dimensional stability.

VIULITE® SL20B
KNOB

OPERATOR: KNOB - (MOUNTED ON BOTTOM RAIL)

SLAT OPERATION: TILT-ONLY

AIR SPACE: 27/32" (21.4mm) ☐ ARGON

SLAT WIDTH: 1/2" (12.5mm)

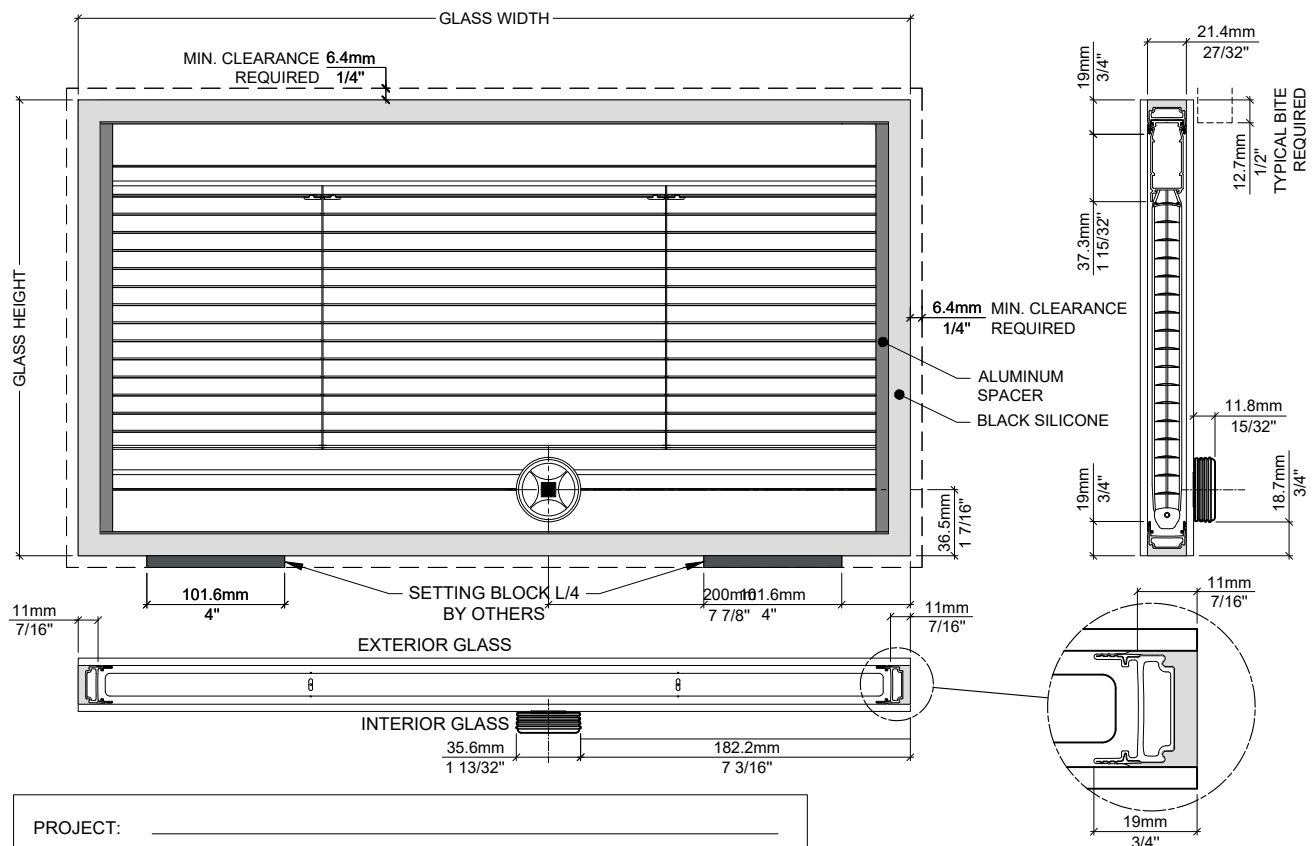
SLAT COLOR: ☐ S102 WHITE
☐ S157 SILVER
☐ S125 BEIGE

SPACER:	ALUMINUM
---------	----------

OPERATOR COLOR: ☐ WHITE
☐ LIGHT GRAY

INTERIOR GLASS:

EXTERIOR GLASS:

[illegible]

PROJECT: _____

ARCHITECT: _____

CLIENT: _____

JOB SITE: _____

DATE: _____

SIGNATURE: _____

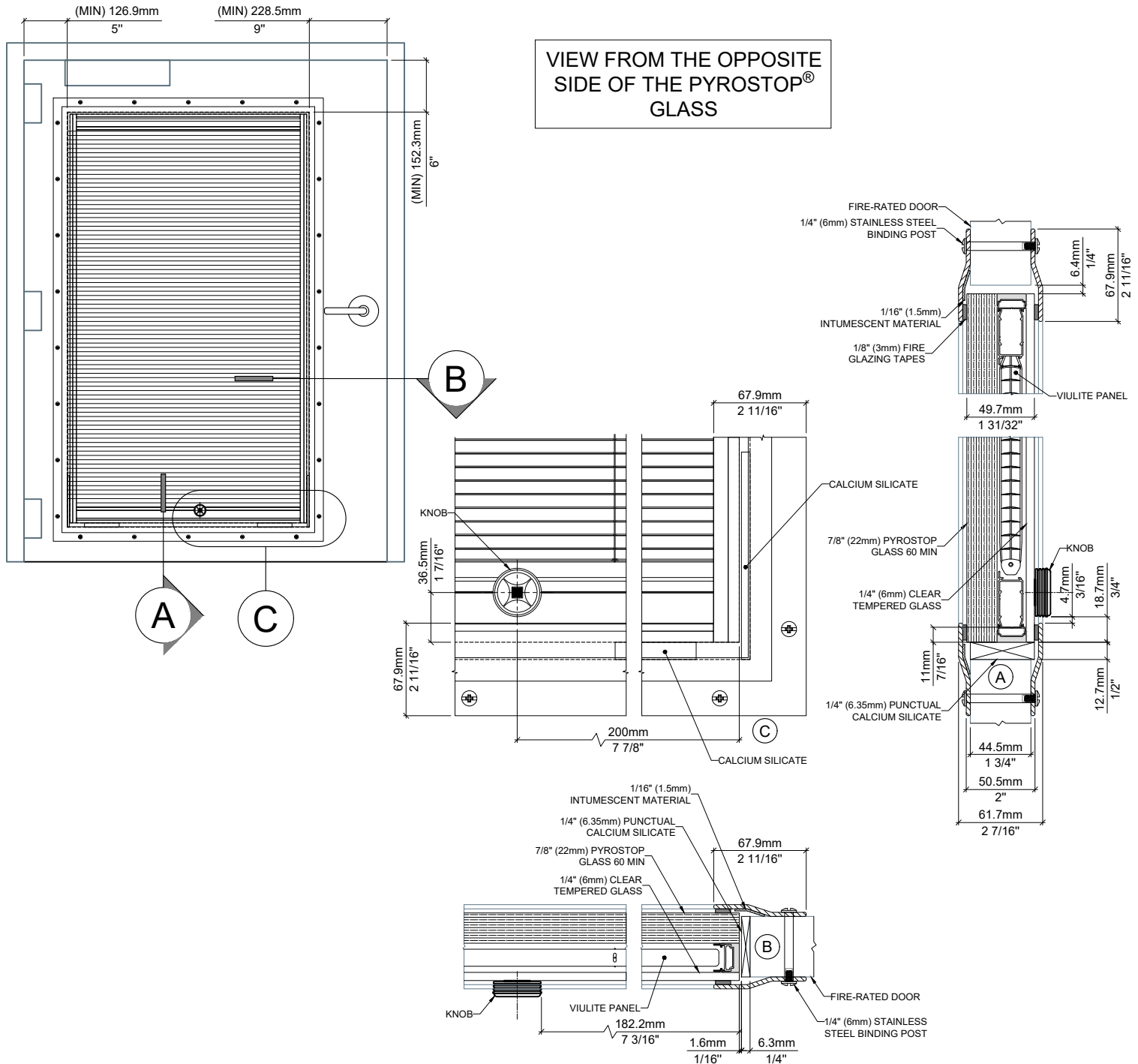
DATE: _____

Unicel Architectural Corp.
2155 Fernand-Lafontaine
Longueuil • Québec • J4G 2J4 • Canada

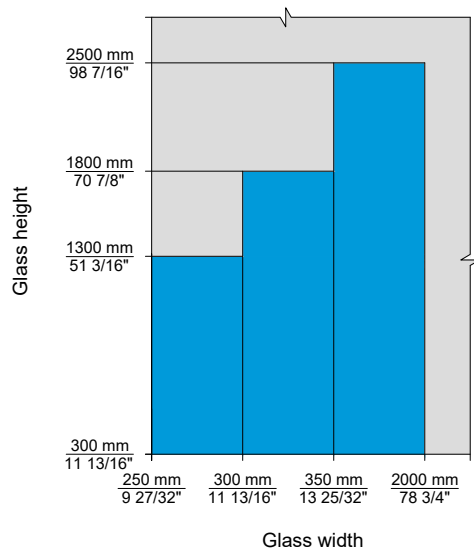
VIU^{LITE}® VL 4.2

OPERABLE ON ONE SIDE

VIULITE® FURNISHED FACTORY-GLAZED IN UNICEL ARCHITECTURAL'S FIRE-RATED STEEL TRIMS (45 MIN. UL / 60 MIN. BS)
MAXIMUM CUT-OUT DIMENSION OF ROUGH OPENING IN DOOR SLAB = 29" X 48" (737mm X 1219mm)



Glass size feasibility range:



- Blinds can only be tilted but will be delivered completely raised (temporarily, for transportation purposes)
- Outside of feasibility range (please contact Unicel Architectural for special arrangements)



**Frame not included (for illustration purposes only)*

Available with:

- **Switch**



(may not be as shown)

- **Remote Control**



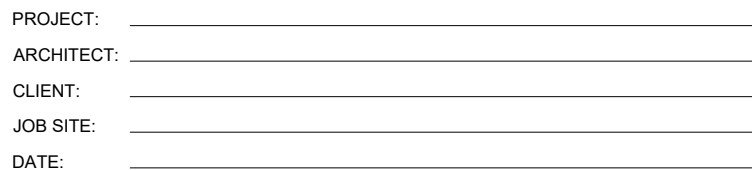
The ViuLite® SL20M insulating glass units are manufactured in accordance with high technical specifications and production standards. The slat **tilting, lowering and raising** or **tilting-only** functions are achieved by an encoder motor that permits a constant speed resulting in a guaranteed synchronized function for multiple blinds. The motor and the electronic blind management system are positioned within the head rail on a slide which has a specially integrated electric socket with a snap-in connector to the spacer bar allowing connection to the external power supply via only three wires, thereby maintaining a complete hermetic seal to the unit.

Slat

Aluminum, AA 6011-T8 alloy. Dimensions: width 1/2" (12.5mm), thickness 0.2 mm. High-resistance polyester paint. The slats have a special treatment designed to eliminate possible emissions of chemical products inside the insulated glass unit, when exposed to ultraviolet and heat radiation i.e. non-fogging.

Internal cords

Thermofixed 100% polyester with internal core and excellent dimensional stability.

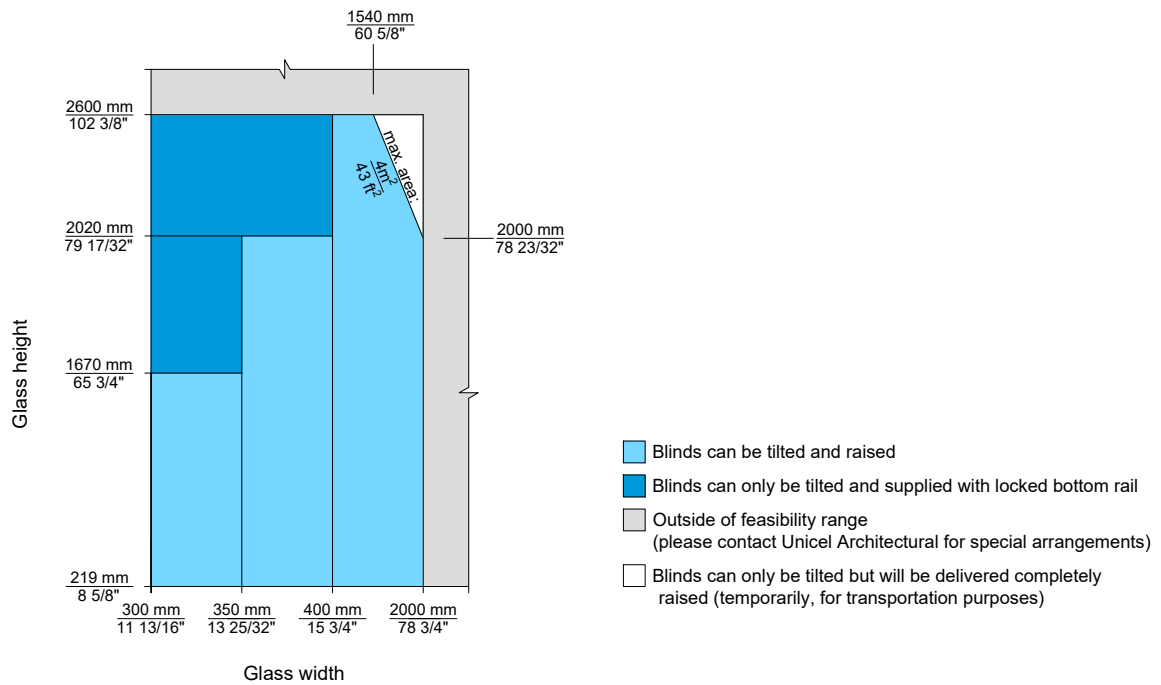
[illegible]

SIGNATURE: _____

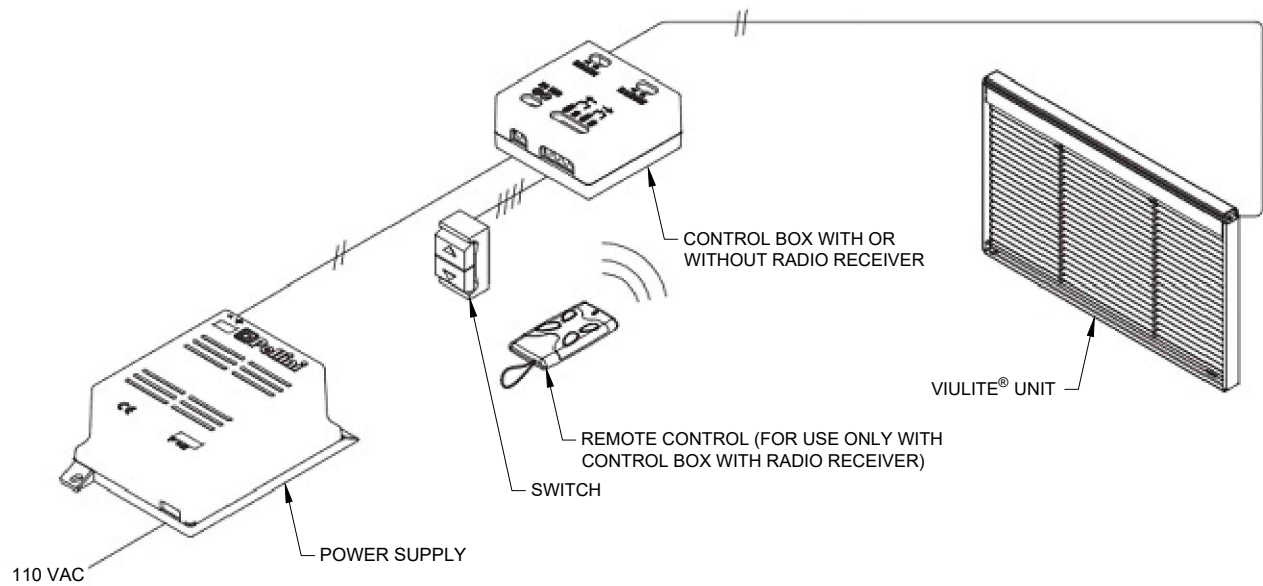
DATE: _____



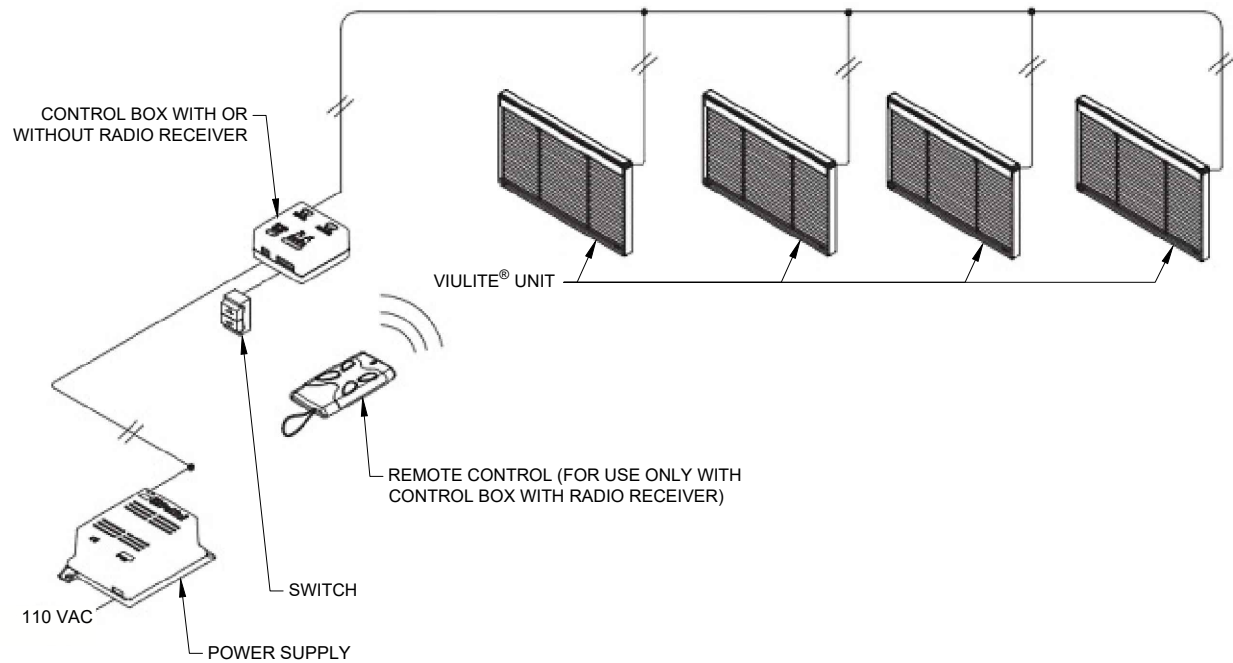
Glass size feasibility range:



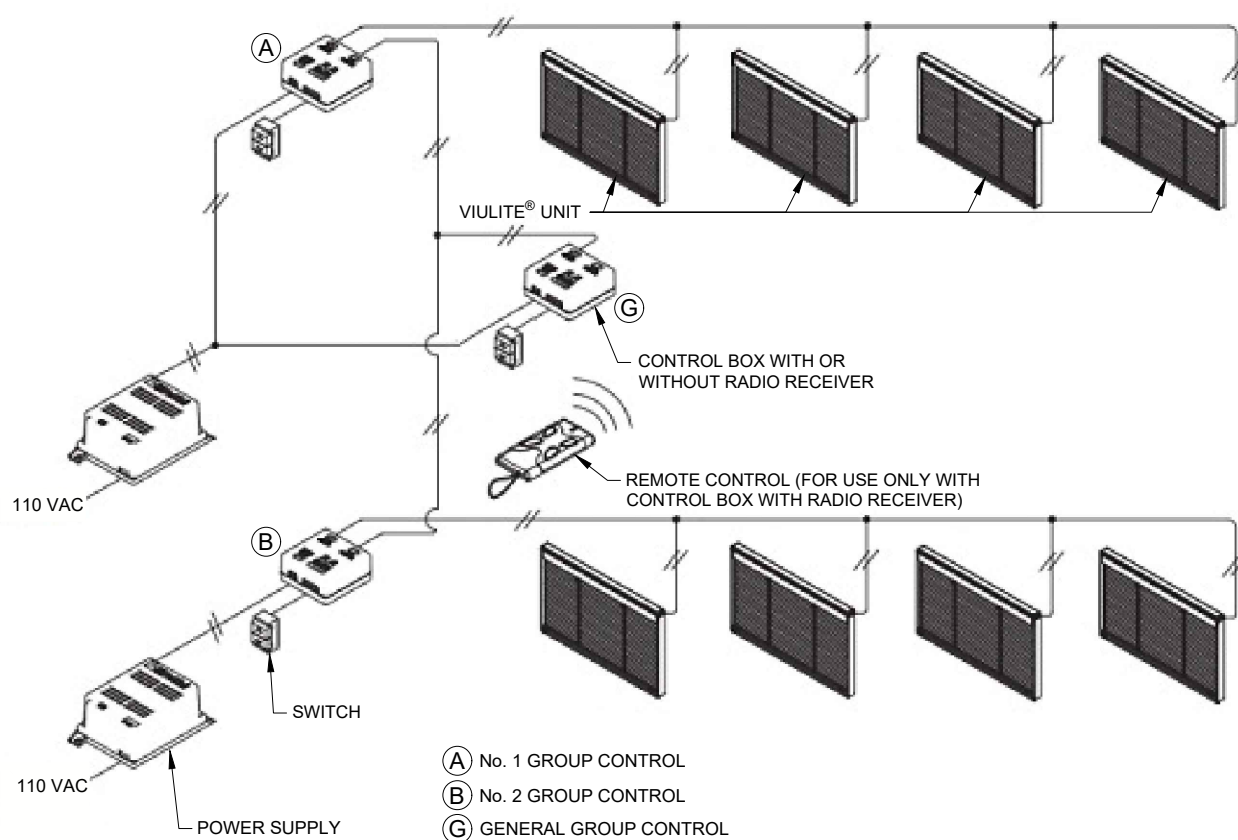
INDEPENDENT UNIT



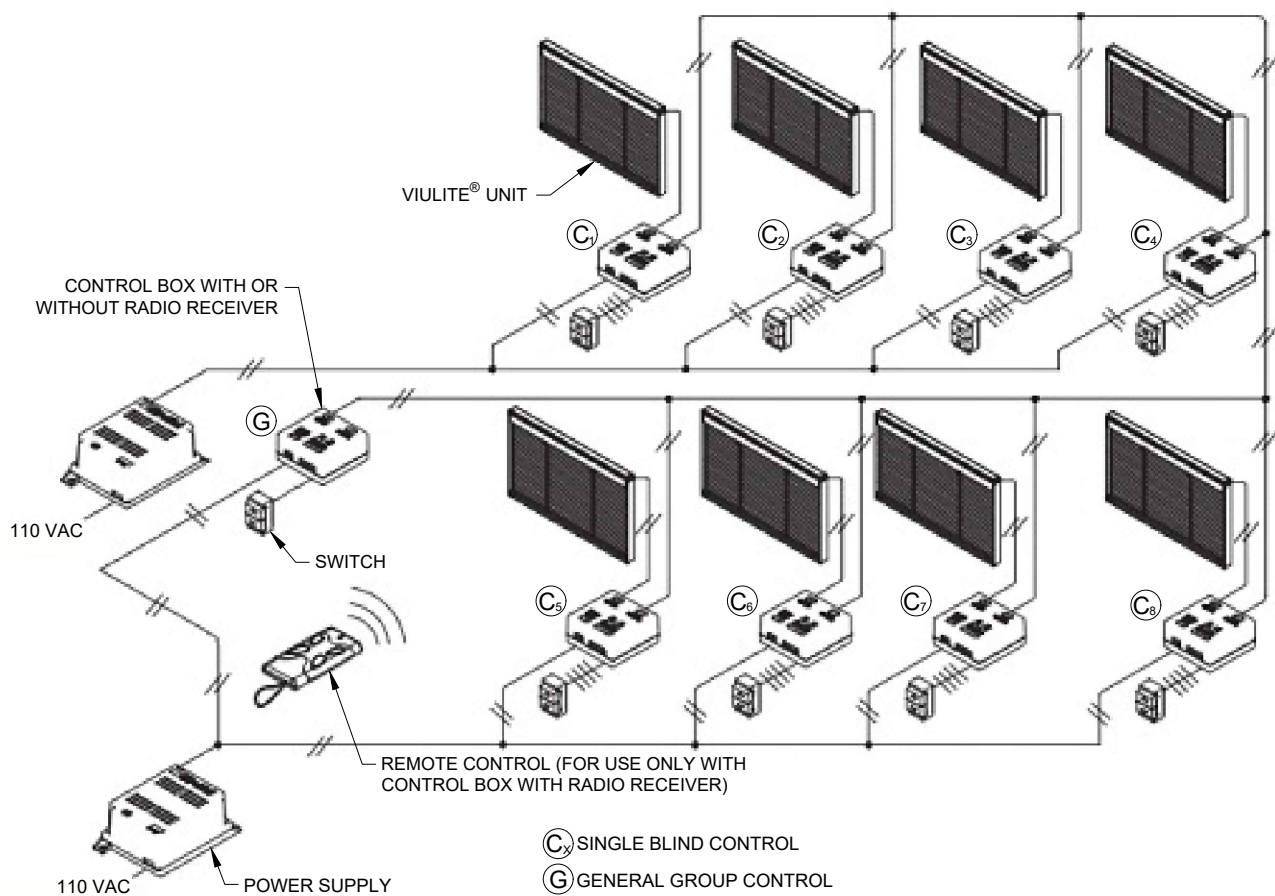
1 GROUP OF UP TO 4 UNITS



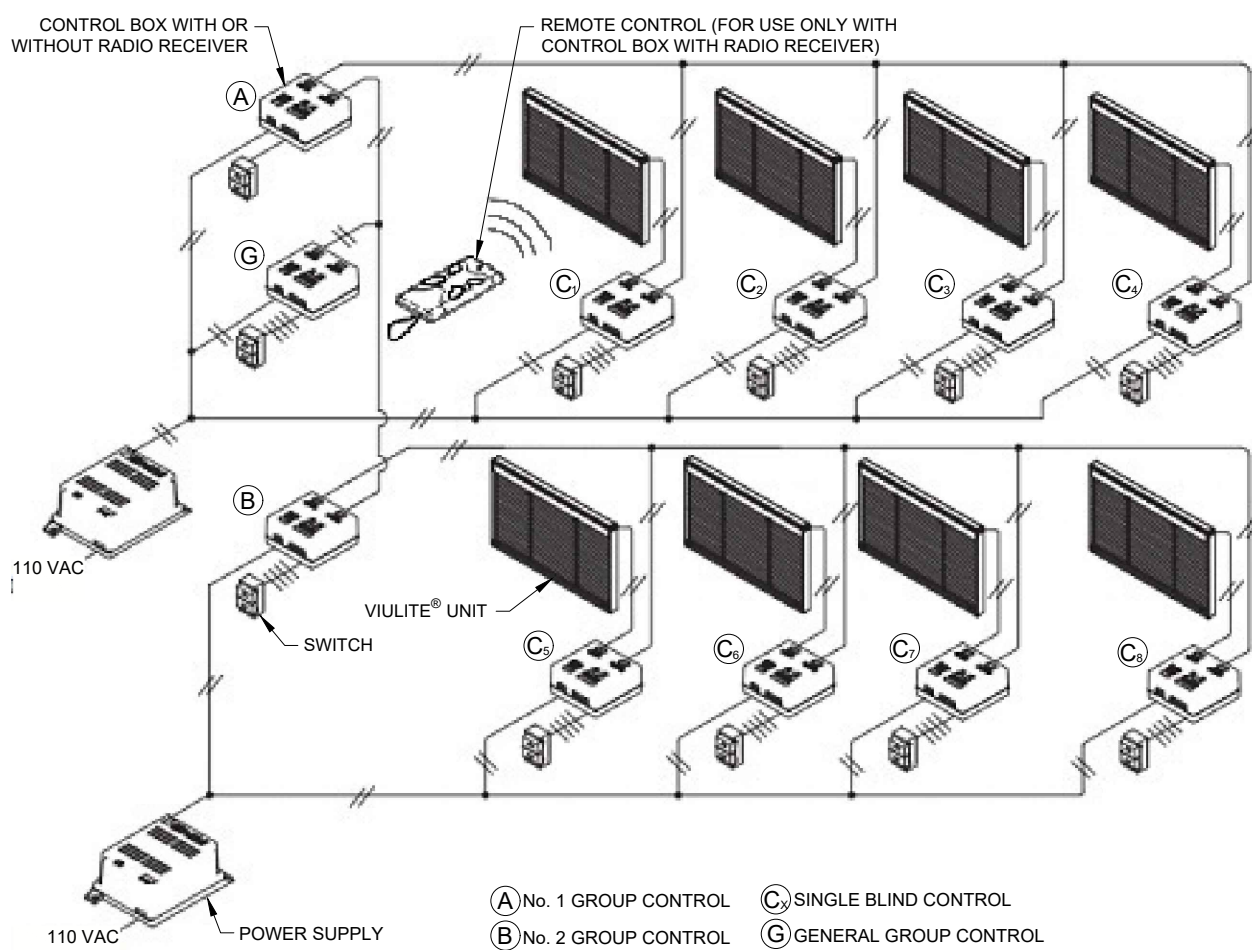
1 MASTER CONTROL + X SUB GROUPS



1 MASTER CONTROL + X INDIVIDUAL CONTROLS



1 MASTER CONTROL + X GROUP + X INDIVIDUAL CONTROLS

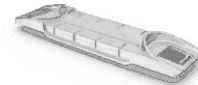




**Frame not included (for illustration purposes only)*

Available with:

- *External Slider*



The ViuLite® SL20S insulating glass units are manufactured in accordance with high technical specifications and production standards. The slat **tilting**, **lowering** and **raising** functions are achieved using a magnetic slider, placed on the right or left-hand edge of the glass. A narrow adhesive transparent profile ensures the linear movement of the slider. The blind is raised and lowered by moving the slider up or down and is tilted by slightly lifting or lowering the same slider.

Slat

Aluminum, AA 6011-T8 alloy. Dimensions: width 1/2" (12.5mm), thickness 0.2 mm. High-resistance polyester paint. The slats have a special treatment designed to eliminate possible emissions of chemical products inside the insulated glass unit, when exposed to ultraviolet and heat radiation i.e. non-fogging.

Internal cords

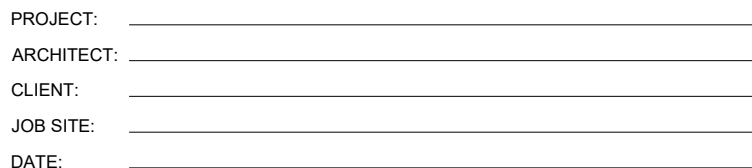
Thermofixed 100% polyester with internal core and excellent dimensional stability.



EXTERIOR GLASS:

VIULITE® PANELS REQUIRED		
FOR FEASIBILITY CHARTS, PLEASE REFER TO VL 6.4.		
GLASS SIZE		
QTY	WIDTH	HEIGHT

FRAMES MUST BE SQUARE, PLUMB AND LEVEL



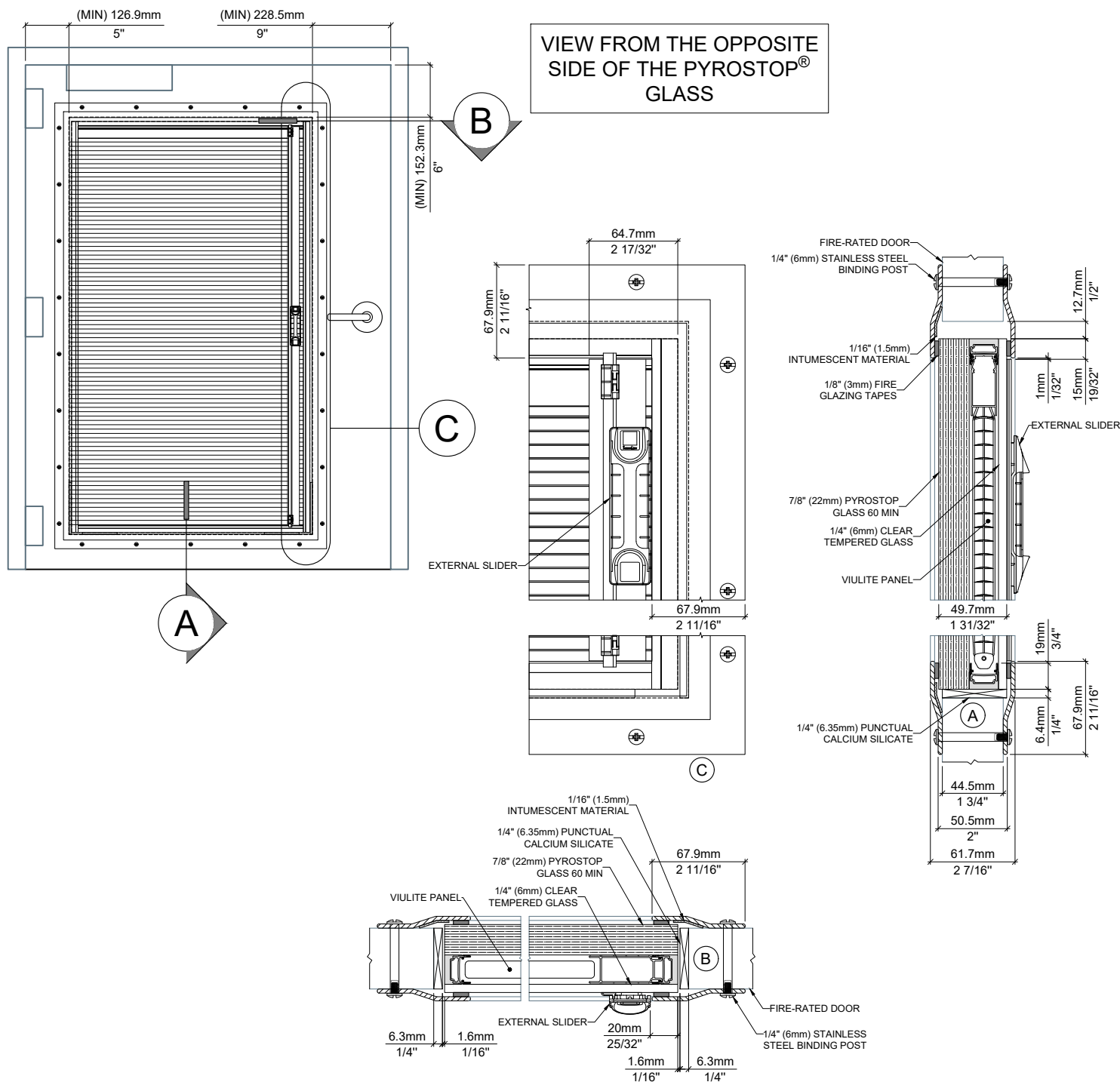
SIGNATURE: _____

DATE: _____



OPERABLE ON ONE SIDE

VIULITE® FURNISHED FACTORY-GLAZED IN UNICEL ARCHITECTURAL'S FIRE-RATED STEEL TRIMS (45 MIN. UL / 60 MIN. BS)
 MAXIMUM CUT-OUT DIMENSION OF ROUGH OPENING IN DOOR SLAB = 29" X 48" (737mm X 1219mm)

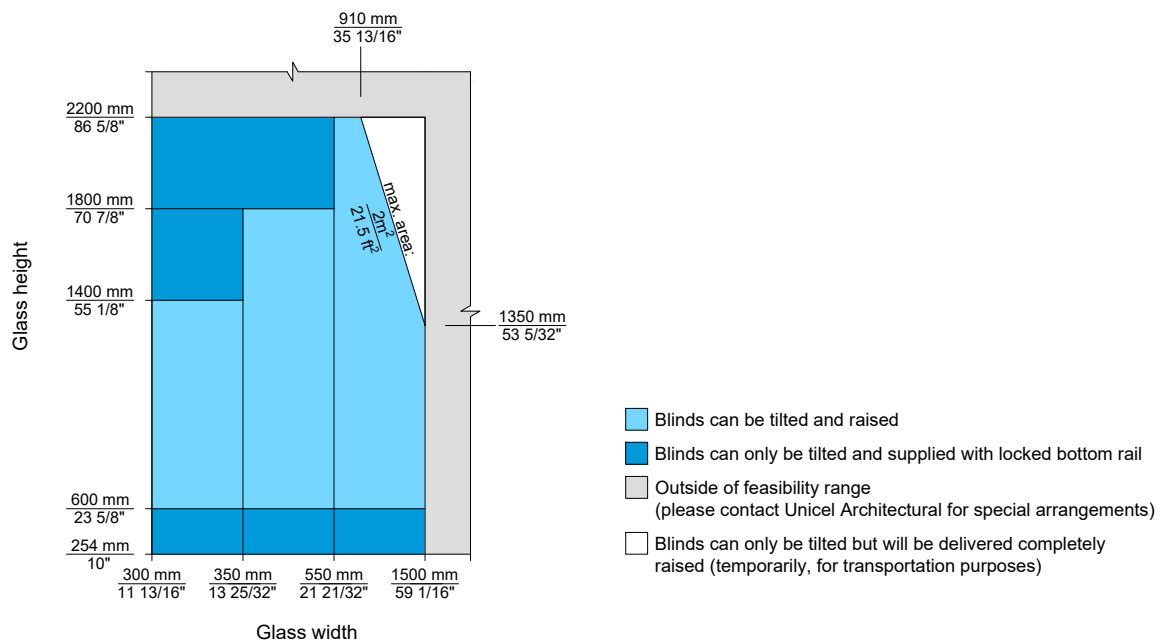


Unicel Architectural Corp.
2155 Fernand-Lafontaine
Longueuil • Québec • J4G2J4 • Canada



VL 6.3

Glass size feasibility range:



MAXIMUM GLASS THICKNESS OF
6.8mm (9/32")

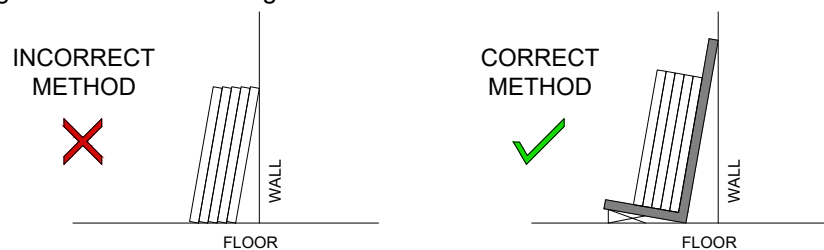
Storage Instructions

A. In Crates

Crates must be kept upright, covered, ventilated and in a dry and safe location.

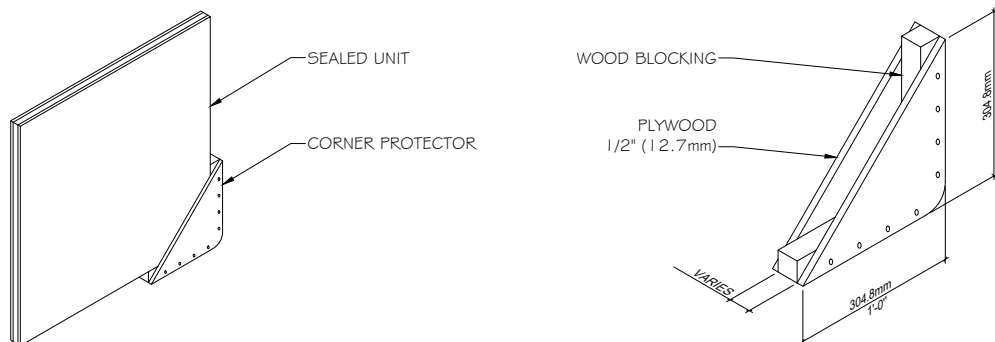
B. Loose Lots

Sealed units must be upright, on blocks and in a safe and dry location. Sealed units should not be stored in a stack, or in direct sunlight as heat build-up may cause breakage. Sealed units should have a base to provide support to all component lites of the unit so that individual lites will not slide out of alignment or out of square causing seal failure or breakage.

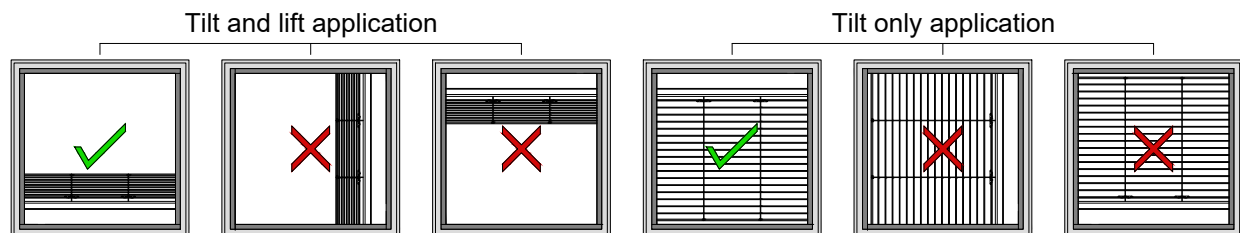


Handling Instructions

A. Extreme care must be taken when a unit is being moved. Edges and corners should be protected in order to prevent glass from fracturing. The use of a corner protector is suggested.



B. ViuLite® sealed glass panels should always be transported and stored with the blinds as shown in the pictures below.



GLAZING INSTRUCTIONS

Frame/Sash

1. All framing members must be specifically designed to accept the glass specified and must have adequate structural strength to support the weight of the glass without deformation.
2. Frame and/or sash must be level, plumb, square and in plane and also be free of any glazing obstruction.
3. Joints must be adequately buttered with sealant to prevent water and air infiltration and all sill members must have weep holes to the outside.

Clearance and edge bite

1. Adequate edge and face clearances must be provided to allow the glass to float freely in the opening, without undue restriction by the framing members. The recommended clearance on both vertical edges of the units is a minimum of 1/4" (6.4mm) for all models except SL20P with corner drive which requires 1/2" (12.7mm).
2. Adequate bite is mandatory to maintain a watertight, weather-proof seal as well as retain the glass in the opening under conditions of wind loading and deformation of the framing members.

Setting blocks and spacers

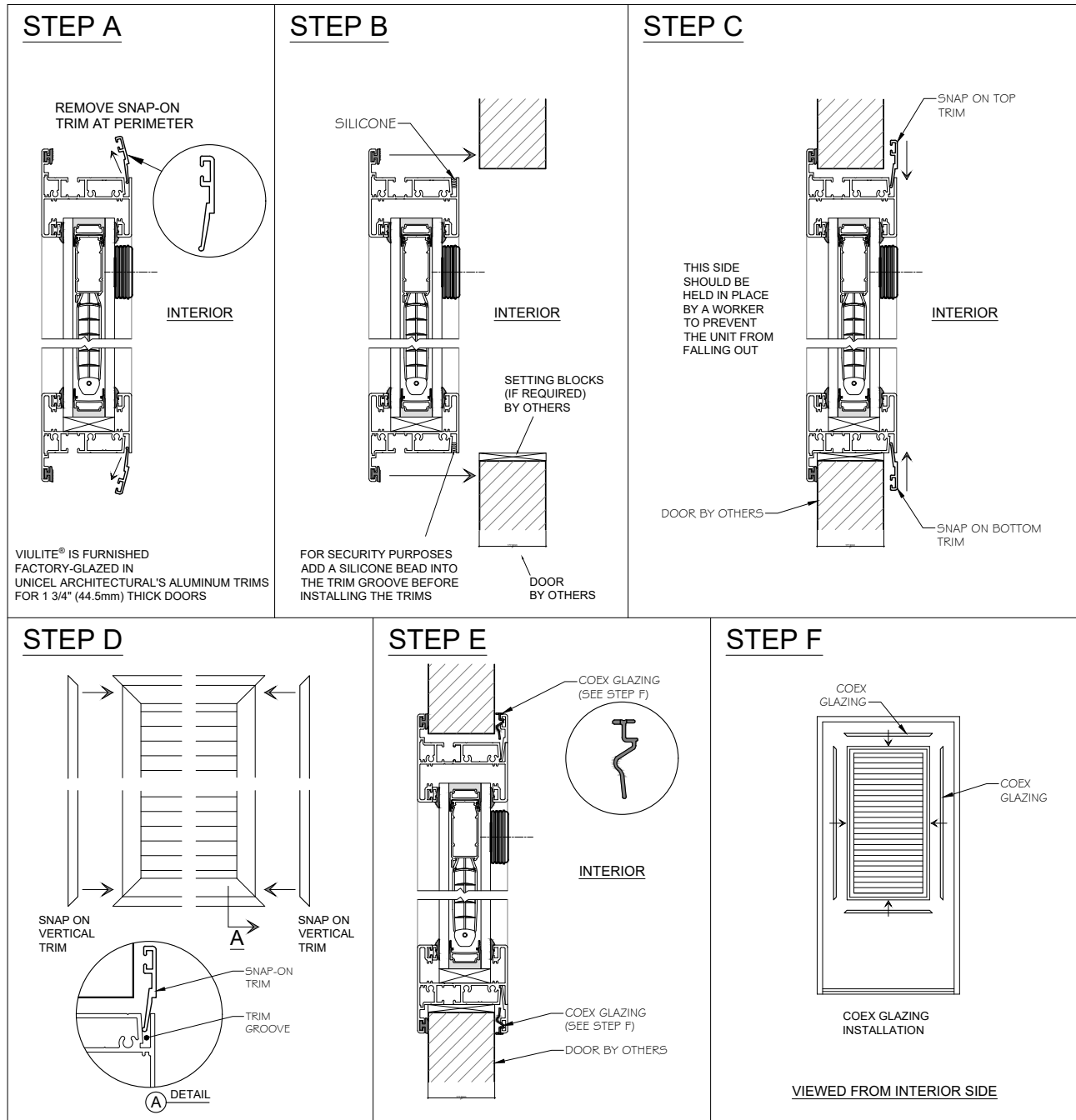
1. Silicone setting blocks should be used on the bottom edge of each lite. Place setting blocks at the end points.

Sealing materials

1. For channel glazing, use only a non-hardening, non-corrosive, gun-applied sealant specifically recommended by the sealant manufacturer for the type of glass specified
2. In no case shall glazing be performed with any oleo-resinous or oil-base compounds, nor shall any glazing sealant be diluted or thinned with any solvent.
3. Never fill the space between the bottom edge of the glass and the sill. This will interfere with the weepage system.
4. All sealants must be applied to provide an absolute watertight seal; on insulating glass units, sealant must contact the glass a minimum of 1/8" (3.2mm) above the metal edge protection.
5. Sash with neoprene or structural neoprene gaskets must have a supplementary wet seal applied between the gasket and the glass, at the bottom edge (sill) of the glass and 6" (152.4mm) up on each jamb. Sill section of all structural neoprene gaskets must have weep holes to the exterior.
6. Special care must be taken when glazing laminated glass, polycarbonates and glass-clad polycarbonates, as they may react unfavorably with certain sealant components. Sealants made of 100% solid components, containing no solvents, must be used. Verify with your sealant manufacturer.
7. All surfaces to be sealed must be completely clean and dry. Verify with sealant manufacturer's recommendations for proper cleaning procedures.

FOR DOORS: VIULITE® FURNISHED FACTORY-GLAZED IN UNICEL ARCHITECTURAL'S ALUMINUM TRIMS

Test the functionality of the units by turning the operator several times in each direction.



MAINTENANCE INSTRUCTIONS

Cleaning and maintenance of glass:

- Routinely clean using ordinary window-washing techniques.
- For best results, use liquid glass cleaners or mild household detergents. Do not use cleaning compounds containing fluorine, strong acids, corrosive alkaline detergents or abrasives.
- To avoid damage, all potentially abrasive particles adhered to glass should be removed prior to cleaning. Razor blades or steel wool should never be used to scrape residue from glass surfaces.

Cleaning and maintenance of all operators:

- Clean the operators with mild soaps or detergents ruled safe for bare hands.
- Always spot test when using a new or stronger detergent.
- Avoid abrasive cleaners. Strong solvents or strong cleaner concentrations can cause damage to surfaces. Over cleaning or excessive rubbing can do more harm than good.
- Abrasive materials such as steel wool and abrasive brushes can wear and harm finishes. Do not use on any operators.
- Never use paint removers, aggressive alkaline, acid or abrasive cleaners. Do not use trisodium phosphate, highly acid cleaners.

Special instructions for cleaning and maintenance of external motor operators:

- Apply the same instructions as mentioned above.
- Never apply liquid soap, detergent or water directly on the operator. Always apply on a cloth before washing or rising.
- To clean, gently rub the exterior shell of the operator only.
- Do not remove the motorization unit from its socket.



VIULITE® WARRANTY STATEMENT

During a period of five (5) years from DATE OF MANUFACTURE, depending on the type of unit construction and the use to which the unit is put, ViuLite® insulating glass units (without capillary breather tubes) are warranted not to develop, under normal conditions, material obstruction of vision as a result of dust or film formation on the internal glass surface caused by failure of the hermetic seal other than through glass breakage. All components located *inside* the insulating glass unit are covered by a five (5)-year warranty; any components located *outside* the insulating glass unit are covered by a two (2)-year warranty. Glass edge separation, changes in properties of interlayer, delamination of glass, glass coatings, and material obstruction through glass not caused by seal failure are not covered beyond the warranty period offered by the original supplier of glass. This warranty does not apply to glass breakage, vandalism, replacement and labor costs, nor delamination of glass after 5 years from date of manufacture.

This warranty is effective only if installation is made in accordance with our specific instructions. This warranty does not apply to units damaged by improper handling or installation. This represents Unicel Architectural's maximum liability. The obligations of Unicel Architectural under this warranty are limited to the repair or replacement, at Unicel architectural's option, of defective parts of the goods, Ex-Works our plant. This warranty does not apply to replacement units beyond the original five (5)-year period to which the original unit is subjected. Unicel Architectural will not be liable for any other expenses involved in the removal of defective units, installation of replacement units, or any other incidental or consequential damages.

Unicel Architectural does not authorize any person, dealer, or distributor to create for it any obligation or liability in connection with the goods. Leakage will be the sole responsibility of the glass contractor or installer.

This warranty shall be void if the unit is subjected to abnormal stresses from the load application of heat, excessive vibration, building or foundation movement; if glazed with materials which do not remain resilient for the life of the warranty, or if the methods and materials used in glazing the unit do not completely repel water for the life of the warranty. Unicel Architectural reserves the right to inspect, in the field, any part or unit which is allegedly defective, or to request that the unit(s) be returned to Unicel Architectural for inspection.

This warranty is valid only if contracts have been paid in full.

Unicel Architectural Corp.

Unicel Architectural Corp.
2155 Fernand-Lafontaine
Longueuil • Québec • J4G 2J4 • Canada

VIULITE® VL 7.5

T: 800.668.1580 | 450.670.6844 • F: 866.496.2628 | 450.670.7144
E: unicel@unicelarchitectural.com • www.unicelarchitectural.com

2021-04-01